

Supplementary Material

Table S1. Mean diameters and corresponding particle diameter ranges considered with Welas and APS particle counters.

Welas (Palas)			APS (TSI)		
d_{min} (μm)	Mean diameter $\overline{dp_i}$ (μm)	d_{max} (μm)	d_{min} (μm)	Mean diameter $\overline{dp_i}$ (μm)	d_{max} (μm)
0.221	0.246	0.274	0.542	0.584	0.626
0.274	0.306	0.34	0.673	0.724	0.777
0.34	0.379	0.422	0.835	0.899	0.965
0.422	0.453	0.487	1.037	1.116	1.197
0.487	0.544	0.604	1.286	1.385	1.486
0.604	0.675	0.75	1.596	1.718	1.843
0.75	0.837	0.931	1.981	2.133	2.288
0.931	1.039	1.155	2.458	2.646	2.839
1.155	1.289	1.433	3.051	3.284	3.523
1.433	1.6	1.778	3.786	4.075	4.371
1.778	1.986	2.207	4.698	5.057	5.425
2.207	2.464	2.738	5.829	6.515	7.234
2.738	3.058	3.398			

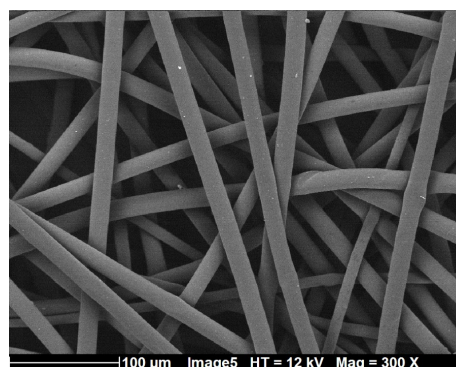


Fig. S1. SEM observation of meltblow (left) and spunbond (right) layers.

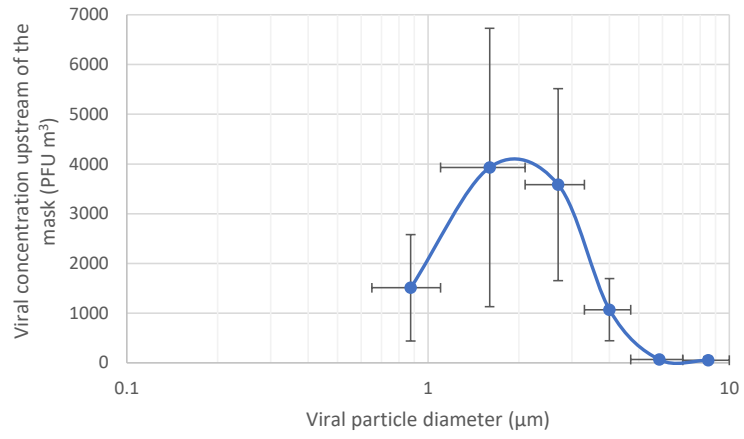


Fig. S2. Viral particle concentration upstream of the masks in PFU m^{-3} from six-stage viable impactor measurements (average and standard deviation $N=3$).