

Fig. S1. Proportions of 18 polycyclic aromatic hydrocarbon homologues in the daytime and night

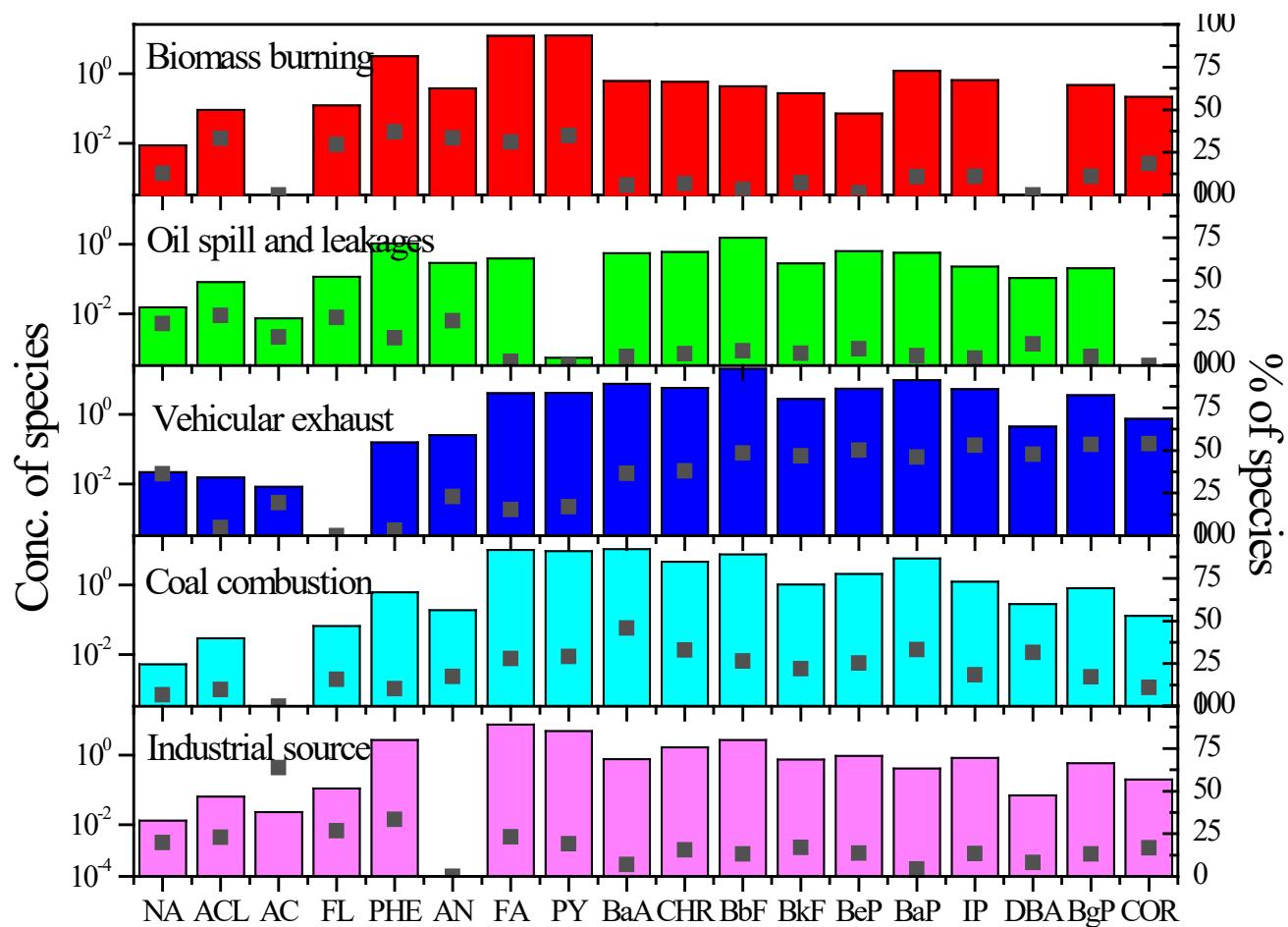


Fig. S2. Source profiles of five PAH sources identified by PMF model for whole sampling period

Table S1. Incremental Lifetime cancer risk parameters

Factors	Definition	Unit	Values		Reference
			Adults	Children	
CSF	Inhalation cancer slope factor of Bap	kg/(d·mg)	3.14	3.14	(Wang et al., 2020b)
IR	Inhalation rate	m <sup>3</sup> /h	0.68	0.36	
ET	Exposure time	h/d	24	24	(Li <i>et al.</i> , 2022)
EF	Exposure frequency	d/a	365	365	
ED	Exposure duration	a	52	6	
BW	Average body weight	kg	70	15	
AT	Average exposure time	d	25550	25550	

Table S2. Volume concentrations of each PAH congener in air (ng m<sup>-3</sup>)

PAHs	Daytime			Night		
	Max	Min	Mean	Max	Min	Mean
NA	0.20	0.01	0.06 ± 0.04	0.14	0.03	0.08 ± 0.04
ACL	0.81	0.10	0.31 ± 0.21	1.01	0.10	0.40 ± 0.20
AC	0.05	0.05	0.05 ± 0.00	0.04	0.04	0.04 ± 0.00
FL	0.23	0.20	0.46 ± 0.26	1.29	0.14	0.58 ± 0.35
PHE	16.5	1.90	6.05 ± 3.65	14.2	1.58	6.78 ± 3.71
AN	3.99	0.22	0.98 ± 0.89	4.12	0.29	1.67 ± 1.16
FA	50.3	4.38	14.3 ± 10.4	58.7	3.59	23.1 ± 16.0
PY	50.1	3.83	12.6 ± 10.6	43.2	3.14	21.5 ± 15.7
BaA	30.6	1.96	6.59 ± 6.29	32.2	1.93	17.1 ± 13.8
CHR	23.4	2.66	6.57 ± 4.80	22.5	2.15	12.6 ± 8.86
BbF	44.2	3.95	11.9 ± 8.89	35.1	3.98	20.8 ± 14.2
BkF	13.3	1.41	3.58 ± 2.63	9.61	1.25	5.71 ± 3.64
BeP	18.6	1.83	5.16 ± 3.73	14.9	1.73	8.84 ± 5.94
BaP	32.3	1.56	6.74 ± 6.76	27.7	1.67	15.2 ± 11.5
IP	21.4	1.85	5.04 ± 4.26	12.6	1.58	7.87 ± 5.10
DBA	2.62	0.21	0.73 ± 0.55	2.78	0.29	1.43 ± 1.10
BgP	16.4	1.45	3.85 ± 3.23	9.59	1.24	5.89 ± 3.78
COR	5.54	0.51	1.23 ± 1.08	2.51	0.44	1.67 ± 1.03