

Supplement of

**Forest Fire Induced Air Pollution over Eastern India During
March 2021**

Rajesh Kumar Sahu, Manoj Hari and Bhisma Tyagi *

Correspondence to: Bhisma Tyagi (tyagib@nitrkl.ac.in)

Fig. S1 Land cover map of the study domain showing the forest distribution. The land cover map was made by classification bands of Landsat 8 (dated 2021).

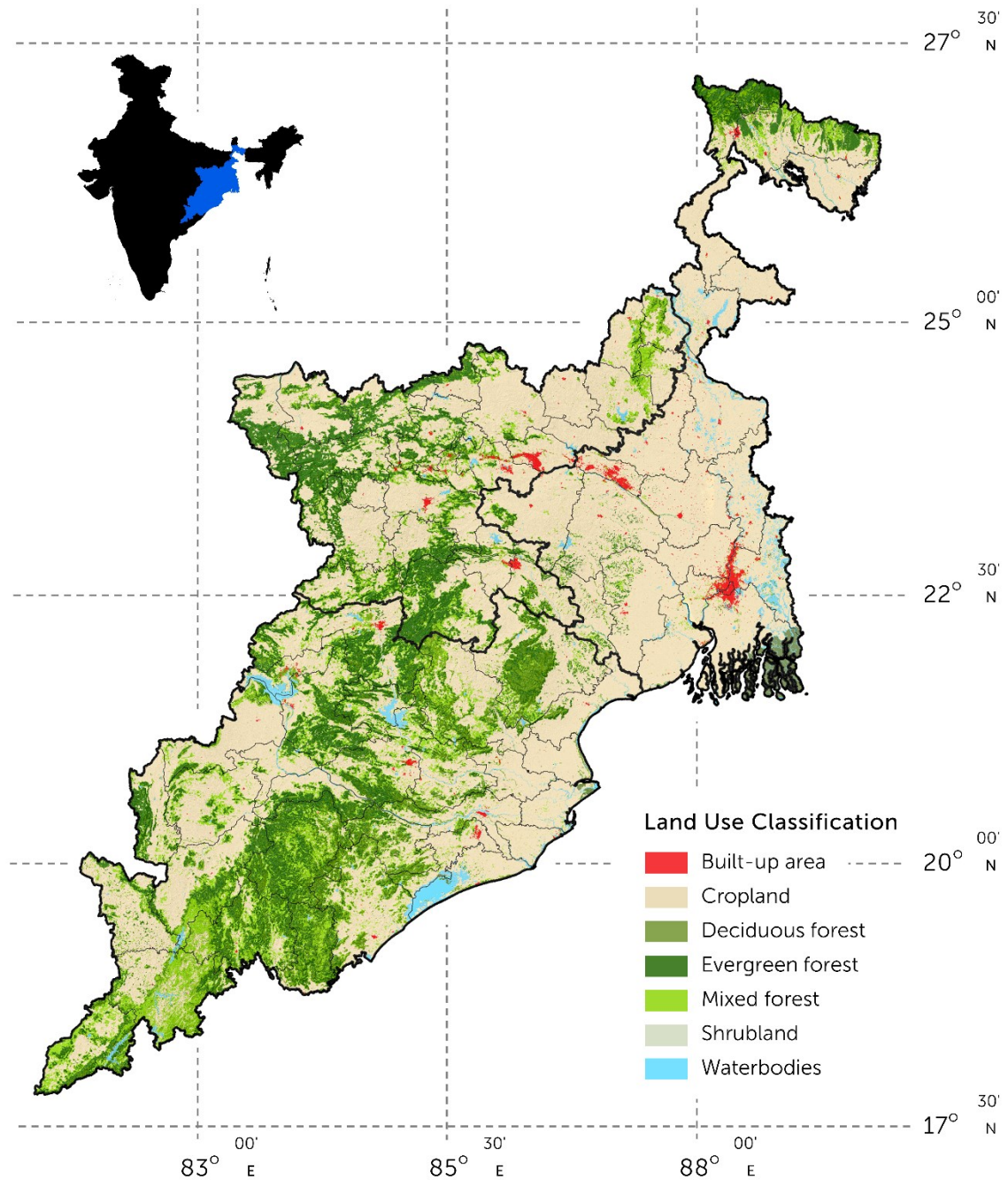


Fig. S2 Temporal distribution of surface observed PM_{2.5} and PM₁₀ for the selected observational sites during the fire episode across multiple years. Solid line and dashed line represent values of PM_{2.5} and PM₁₀ concentration respectively.

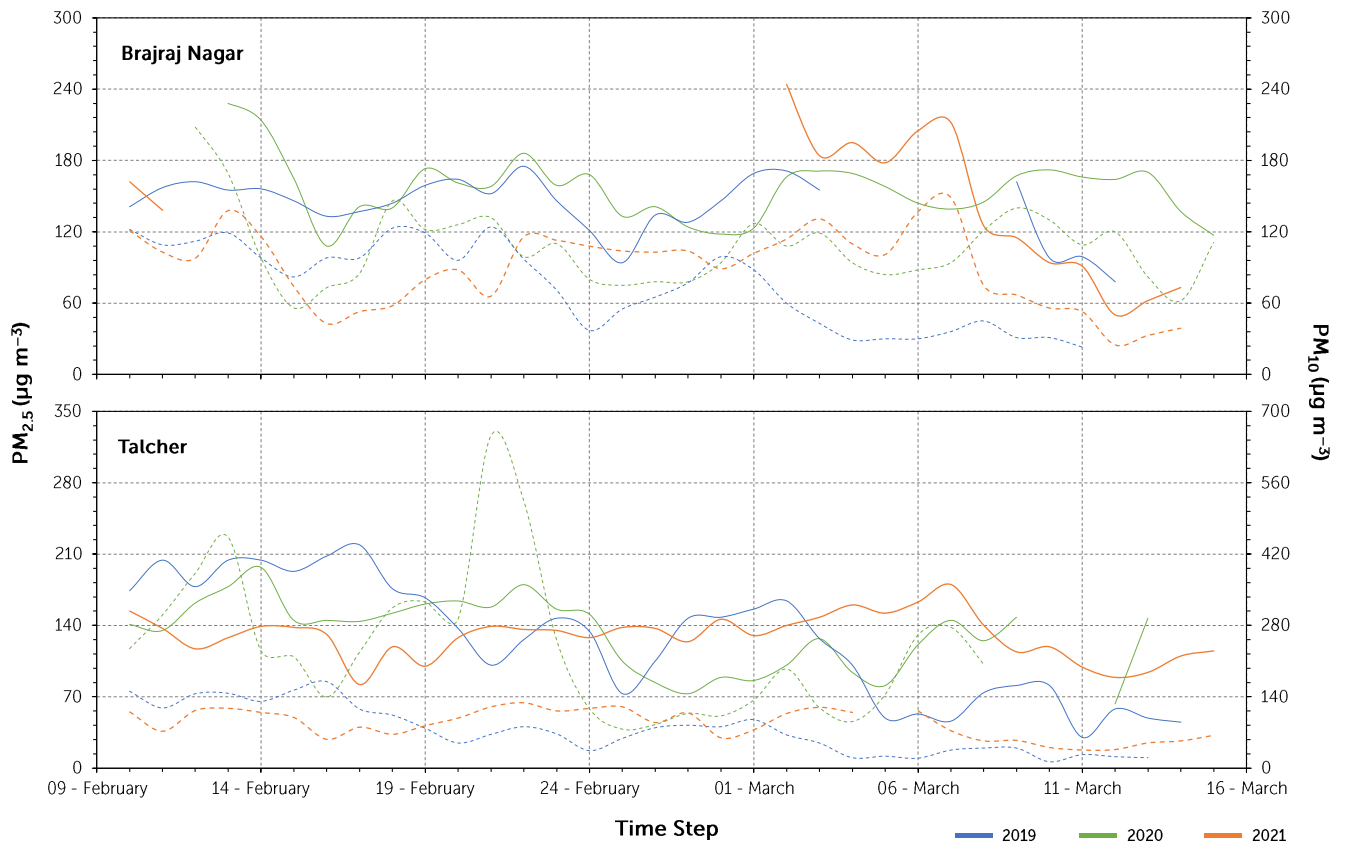


Fig. S3 Temporal distribution of in-situ CO and O₃ during the fire episode across multiple years. Solid line and dashed line represent values of O₃ and CO concentration respectively.

