

Supporting Information

**Characteristics and Sources of Organic Aerosol Markers in
PM_{2.5}**

Zheng Li¹, Ruiwen Zhou¹, Yuanyuan Li¹, Min Chen¹, Yachen Wang¹, Tonglin Huang¹,
Yanan Yi¹, Zhanfang Hou¹, Jingjing Meng^{1,*}, Li Yan^{2,**}

¹ School of Geography and the Environment, Liaocheng University, Liaocheng
252000, China

² Chinese Academy for Environmental Planning, Beijing 100012, China

*Corresponding author: Jingjing Meng (E-mail: mengjingjing@lcu.edu.cn)

**Corresponding author: Li Yan (E-mail: yanli@caep.org.cn)

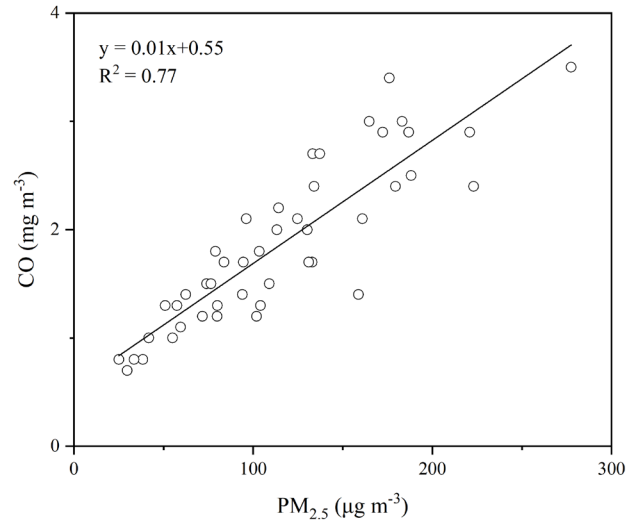


Fig. S1. Linear regression of PM_{2.5} with CO in the whole sampling period.

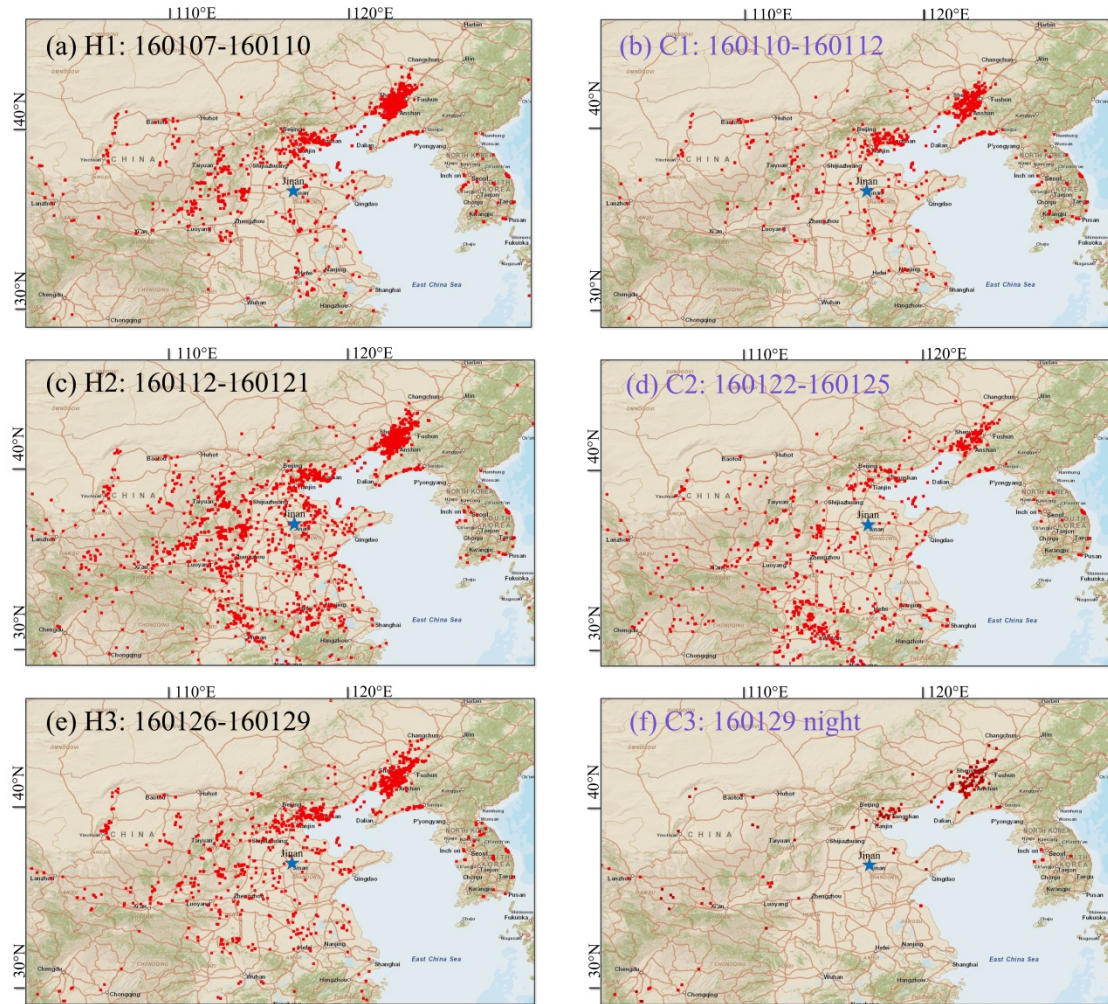


Fig. S2. Fire spots during haze (a, c, e) and clean (b, d, f) sampling periods (provided by the Fire Information for Resource Management System, FIRMS; <https://firms.modaps.eosdis.nasa.gov>). Asterisk denotes the sampling site.

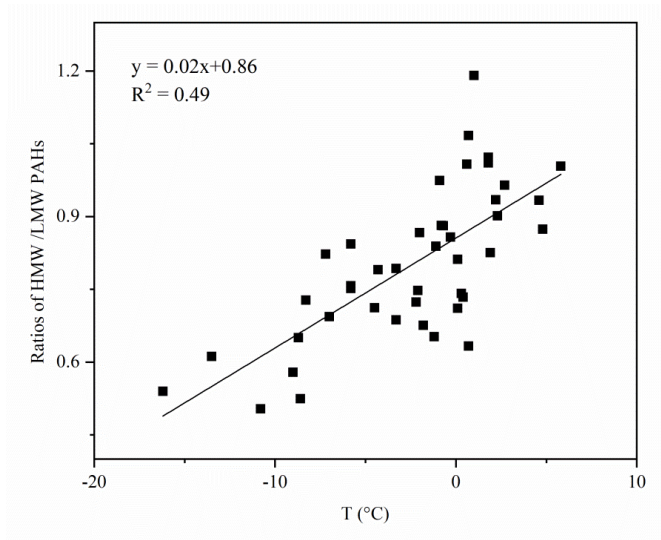


Fig. S3. Linear regression of temperature with the ratio of HMW PAHs/LMW PAHs in the whole sampling period.

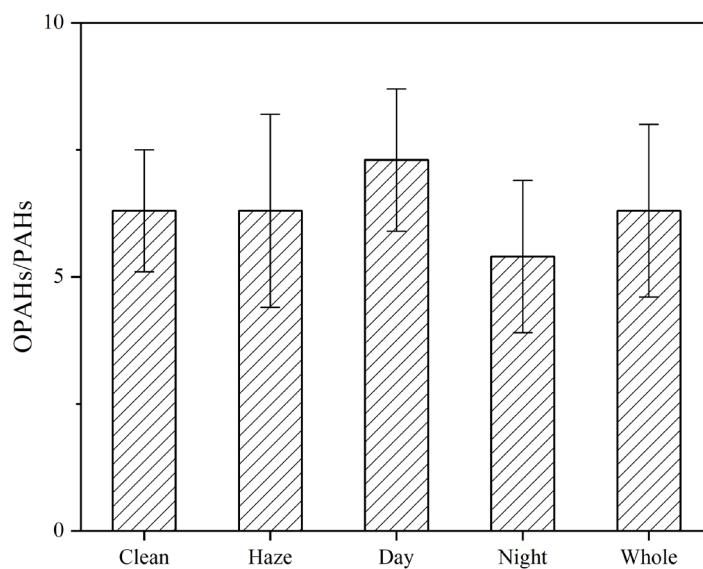


Fig. S4. Variation of the ratios of OPAHs/PAHs in different sampling periods.