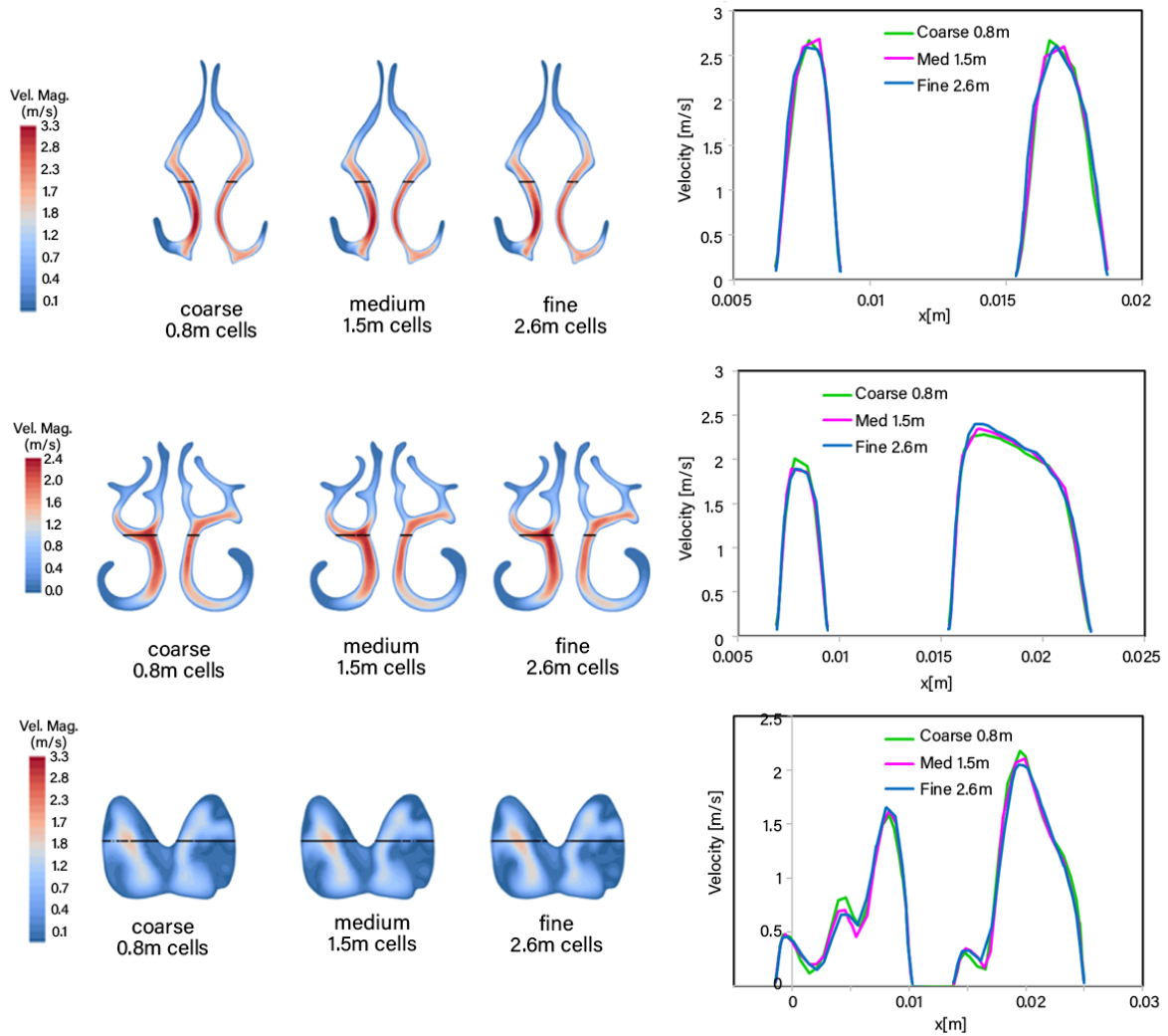


SUPPLEMENTARY MATERIAL



Supplementary Material 1: Mesh independence results showing the velocity magnitude contours at coronal slices in the nasal cavity for three models: i) coarse mesh with 0.8 million elements; ii) medium mesh with 1.5 million elements and; iii) fine mesh with 2.6 million elements. Line profiles were taken at the same horizontal sections passing through the highest velocity regions which showed very similar results.