

The Dynamics of Exhaled Aerosol Following the Usage of Heated Tobacco Product, Electronic Cigarette, and Conventional Cigarette

**Meišutovič-Akhtarjeva, Marija¹; Prasauskas, Tadas¹; Čiužas, Darius¹;
Kaunelienė, Violeta¹; Martuzevičius, Dainius¹**

¹Department of Environmental Technology, Kaunas University of Technology, Lithuania.

SUPPLEMENTARY MATERIAL

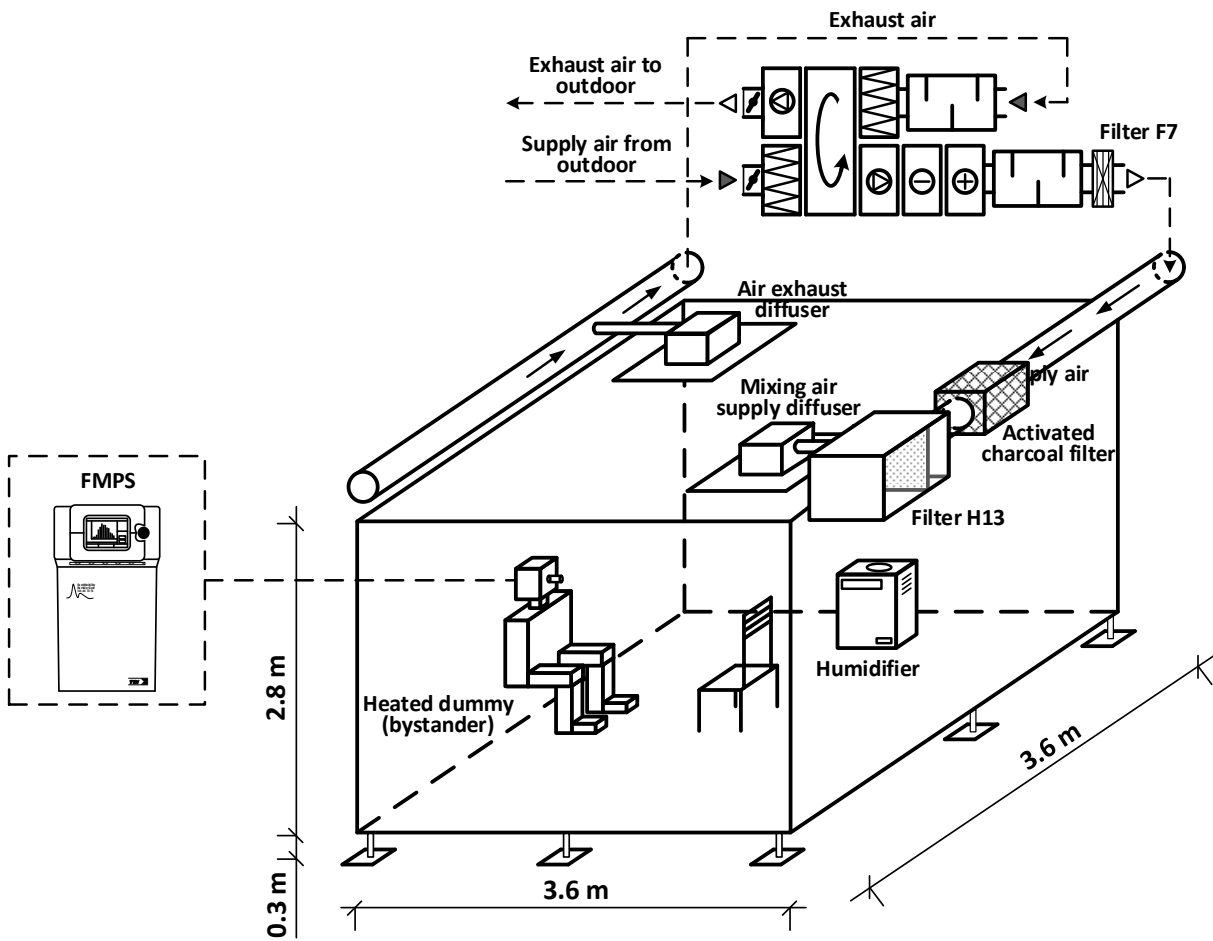


Figure S1. Experimental chamber

Table S1. Experimental worksheet

Run number	Device	Distance, m	AC H, h ⁻¹	R H, %	Volunteer's No.	Conc max	Conc 5s (total)	Conc 10s	Conc 120s	Conc 5s (6nm)	Conc 10s (6nm)	Conc 120s (6nm)	Mode Max	Mode 5 s	Mode 10s	Mode 120 s	5/maximum	10/maximum	120/maximum	(lnMax-Ln5)/(5/60)	(lnMax-Ln10)/(10/60)
1	HTP_Eco	0.5	0.2	30	v1	1.01E+05	7.01E+03	8.41E+02	8.11E+02	6.71E+02	3.45E+01	6.97E+01	9.31E+01	6.04E+00	8.06E+01	9.31E+01	6.94E-02	8.33E-03	8.03E-03	3.20E+01	2.87E+01
2	HTP_Std	0.5	0.2	30	v1	2.88E+06	2.98E+04	5.03E+02	1.81E+03	1.39E+02	1.49E+01	1.08E+02	1.43E+02	9.31E+01	4.53E+01	9.31E+01	1.03E-02	1.75E-04	6.27E-04	5.49E+01	5.19E+01
12	EC	0.5	0.2	30	v1	2.47E+06	1.95E+04	1.64E+04	7.38E+03	3.05E+02	5.10E+02	1.33E+02	1.24E+02	3.40E+01	3.40E+01	2.94E+01	7.89E-03	6.64E-03	2.99E-03	5.81E+01	3.01E+01
28	HTP_Eco	1	0.2	30	v1	8.66E+05	9.69E+04	1.02E+04	2.06E+03	4.87E+03	2.20E+02	6.25E-02	1.24E+02	8.06E+01	8.06E+01	4.53E+01	1.12E-01	1.18E-02	2.38E-03	2.63E+01	2.66E+01
26	HTP_Std	1	0.2	30	v1	1.51E+06	1.14E+05	2.31E+04	2.03E+03	2.73E+03	9.08E+02	6.25E-02	1.24E+02	8.06E+01	8.06E+01	6.04E+01	7.55E-02	1.53E-02	1.35E-03	3.10E+01	2.51E+01
3	EC	1	0.2	30	v1	1.74E+06	1.88E+05	4.26E+03	3.79E+03	1.20E+04	2.60E+02	1.20E+02	1.43E+02	6.04E+00	3.92E+01	3.40E+01	1.08E-01	2.45E-03	2.18E-03	2.67E+01	3.61E+01
25	HTP_Eco	2	0.2	30	v1	9.99E+03	2.83E+03	2.32E+03	5.00E+03	1.00E-02	1.00E-02	6.25E-02	6.98E+01	6.04E+01	6.98E+01	5.23E+01	2.83E-01	2.32E-01	5.00E-01	1.51E+01	8.76E+00
20	HTP_Std	2	0.2	30	v1	1.66E+04	9.80E+03	4.82E+03	1.03E+04	3.23E+02	1.14E+02	1.08E+02	6.04E+01	5.23E+01	5.23E+01	5.23E+01	5.90E-01	2.90E-01	6.21E-01	6.32E+00	7.42E+00
9	EC	2	0.2	30	v1	2.79E+04	1.09E+04	1.09E+04	1.16E+03	1.56E+02	6.16E+02	5.92E+01	1.08E+02	3.40E+01	3.40E+01	2.55E+01	3.91E-01	3.91E-01	4.17E-02	1.13E+01	5.64E+00
19	HTP_Eco	0.5	1	30	v1	1.64E+06	7.82E+03	2.26E+03	5.19E+03	3.77E+02	1.05E+02	1.21E+02	8.06E+01	6.04E+01	6.04E+01	6.98E+01	4.77E-03	1.38E-03	3.16E-03	6.41E+01	3.95E+01
11	HTP_Std	0.5	1	30	v1	1.79E+06	6.98E+03	1.90E+02	3.16E+03	5.56E+02	4.31E+01	9.34E+01	9.31E+01	6.98E+01	6.04E+00	6.98E+01	3.90E-03	1.06E-04	1.76E-03	6.66E+01	5.49E+01
27	EC	0.5	1	30	v1	5.77E+06	7.02E+03	6.16E+02	1.21E+04	1.00E-02	1.00E-02	6.25E-02	1.08E+02	3.40E+01	1.08E+01	3.40E+01	1.22E-03	1.07E-04	2.10E-03	8.05E+01	5.49E+01
4	HTP_Eco	1	1	30	v1	9.45E+05	3.54E+03	1.79E+03	2.14E+03	8.12E+01	9.59E+01	1.05E+02	9.31E+01	6.98E+01	6.98E+01	6.98E+01	3.75E-03	1.89E-03	2.26E-03	6.70E+01	3.76E+01
17	HTP_Std	1	1	30	v1	3.81E+05	1.39E+04	1.24E+03	5.18E+03	4.05E+02	8.29E+01	9.67E+01	1.08E+02	6.98E+01	6.04E+01	5.23E+01	3.65E-02	3.25E-03	1.36E-02	3.97E+01	3.44E+01
18	EC	1	1	30	v1	2.41E+06	1.21E+05	1.15E+04	3.89E+03	2.89E+03	2.24E+02	8.41E+01	6.04E+00	9.31E+01	3.40E+01	2.94E+01	5.02E-02	4.77E-03	1.61E-03	3.59E+01	3.21E+01
10	HTP_Eco	2	1	30	v1	2.67E+04	1.09E+04	4.13E+03	1.21E+03	1.08E+02	1.00E-02	7.62E+01	6.04E+01	5.23E+01	6.04E+01	3.92E+01	4.08E-01	1.55E-01	4.54E-02	1.08E+01	1.12E+01
35	HTP_Std	2	1	30	v1	1.32E+05	5.43E+04	1.67E+04	2.73E+03	3.04E+02	4.86E+02	6.25E-02	9.31E+01	9.31E+01	9.31E+01	6.98E+01	4.11E-01	1.27E-01	2.07E-02	1.07E+01	1.24E+01
36	EC	2	1	30	v1	3.19E+05	8.35E+04	1.07E+04	3.21E+03	1.00E-02	1.00E-02	6.25E-02	9.31E+01	9.31E+01	2.94E+01	1.08E+01	2.62E-01	3.35E-02	1.01E-02	1.61E+01	2.04E+01
7	HTP_Eco	0.5	0.2	70	v1	2.15E+06	1.27E+04	4.70E+02	1.98E+03	1.00E-02	5.44E+01	9.24E+01	1.24E+02	9.31E+01	8.06E+01	6.04E+01	5.91E-03	2.18E-04	9.20E-04	6.16E+01	5.06E+01
8	HTP_Std	0.5	0.2	70	v1	1.60E+06	7.54E+03	7.19E+02	4.39E+03	2.95E+02	6.93E+01	5.15E+01	1.66E+02	1.08E+02	8.06E+01	6.98E+01	4.71E-03	4.50E-04	2.74E-03	6.43E+01	4.62E+01
21	EC	0.5	0.2	70	v1	5.10E+06	5.47E+04	5.04E+03	3.42E+03	1.18E+03	2.67E+02	8.63E+01	9.31E+01	9.31E+01	3.40E+01	1.91E+01	1.07E-02	9.88E-04	6.70E-04	5.44E+01	4.15E+01
13	HTP_Eco	1	0.2	70	v1	4.71E+05	4.01E+04	3.30E+03	2.98E+03	1.94E+03	1.56E+02	8.43E+01	1.08E+02	8.06E+01	6.98E+01	6.04E+01	8.51E-02	7.01E-03	6.32E-03	2.96E+01	2.98E+01
14	HTP_Std	1	0.2	70	v1	7.76E+05	1.21E+05	2.84E+04	2.72E+03	6.88E+00	1.02E+03	2.34E+01	1.08E+02	1.08E+02	8.06E+01	6.04E+01	1.56E-01	3.66E-02	3.50E-03	2.23E+01	1.98E+01

33	EC	1	0.2	70	v1	1.06E+06	3.65E+03	9.58E+01	5.74E+03	1.67E+02	1.00E-02	6.25E-02	1.43E+02	9.31E+00	1.08E+01	3.40E+01	3.44E-03	9.04E-05	5.42E-03	6.81E+01	5.59E+01
34	HTP_Eco	2	0.2	70	v1	1.62E+05	5.41E+04	1.25E+04	2.10E+03	1.00E-02	5.23E+02	6.25E-02	1.08E+02	1.08E+02	8.06E+01	5.23E+01	3.34E-01	7.72E-02	1.29E-02	1.32E+01	1.54E+01
32	HTP_Std	2	0.2	70	v1	5.11E+03	4.79E+03	4.65E+03	4.04E+03	1.00E-02	1.00E-02	6.25E-02	6.98E+01	6.98E+01	6.98E+01	6.98E+01	9.37E-01	9.10E-01	7.90E-01	7.76E-01	5.66E-01
15	EC	2	0.2	70	v1	4.80E+05	6.77E+04	3.78E+04	3.65E+03	1.57E+03	1.22E+03	8.49E+01	1.08E+02	9.31E+01	9.31E+01	2.94E+01	1.41E-01	7.88E-02	7.61E-03	2.35E+01	1.52E+01
22	HTP_Eco	0.5	1	70	v1	8.46E+05	8.10E+02	4.35E+02	2.30E+03	9.16E+01	7.40E+01	1.11E+02	6.04E+00	6.04E+00	6.04E+00	5.23E+01	9.57E-04	5.14E-04	2.71E-03	8.34E+01	4.54E+01
29	HTP_Std	0.5	1	70	v1	1.71E+06	1.19E+03	3.33E+02	1.25E+03	1.00E-02	1.00E-02	6.25E-02	1.08E+02	1.08E+01	1.08E+01	1.08E+01	6.96E-04	1.95E-04	7.31E-04	8.72E+01	5.13E+01
30	EC	0.5	1	70	v1	3.86E+06	3.99E+05	4.27E+04	4.59E+03	1.00E-02	2.08E+03	6.25E-02	1.24E+02	1.24E+02	9.31E+01	1.08E+01	1.03E-01	1.11E-02	1.19E-03	2.72E+01	2.70E+01
31	HTP_Eco	1	1	70	v1	1.15E+06	8.38E+02	5.31E+02	4.32E+03	1.00E-02	1.00E-02	6.25E-02	9.31E+01	1.08E+01	1.08E+01	5.23E+01	7.29E-04	4.62E-04	3.76E-03	8.67E+01	4.61E+01
23	HTP_Std	1	1	70	v1	5.53E+03	5.03E+03	4.77E+03	4.13E+03	1.28E+02	7.17E+01	5.97E+01	6.04E+01	6.98E+01	6.98E+01	6.04E+01	9.10E-01	8.63E-01	7.47E-01	1.14E+00	8.87E-01
24	EC	1	1	70	v1	3.08E+06	1.23E+05	1.94E+04	5.59E+03	1.00E-02	1.56E+03	1.01E+01	1.43E+02	1.24E+02	6.04E+00	3.40E+01	3.99E-02	6.30E-03	1.81E-03	3.86E+01	3.04E+01
16	HTP_Eco	2	1	70	v1	1.50E+05	9.17E+03	6.71E+02	1.29E+03	5.45E+02	4.09E+01	1.64E+02	9.31E+01	6.98E+01	6.98E+01	6.04E+00	6.11E-02	4.47E-03	8.63E-03	3.35E+01	3.25E+01
5	HTP_Std	2	1	70	v1	2.76E+04	3.03E+03	4.33E+03	3.53E+03	7.02E+01	5.34E+01	9.65E+01	6.04E+00	6.98E+01	6.98E+01	6.04E+01	1.10E-01	1.57E-01	1.28E-01	2.65E+01	1.11E+01
6	EC	2	1	70	v1	1.19E+06	2.36E+05	9.63E+04	1.37E+04	1.00E-02	1.61E+03	7.59E+01	1.43E+02	1.43E+02	1.24E+02	3.40E+01	1.98E-01	8.09E-02	1.15E-02	1.94E+01	1.51E+01
37	HTP_Eco	0.5	0.2	30	v2	1.38E+06	1.48E+04	1.41E+03	1.65E+03	1.00E-02	1.00E-02	6.25E-02	3.92E+01	5.23E+01	4.53E+01	4.53E+01	1.07E-02	1.02E-03	1.19E-03	5.44E+01	4.13E+01
38	HTP_Std	0.5	0.2	30	v2	2.08E+04	4.82E+02	7.21E+02	5.54E+03	1.00E-02	1.00E-02	6.25E-02	3.92E+01	1.08E+01	1.08E+01	6.04E+01	2.32E-02	3.47E-02	2.66E-01	4.52E+01	2.02E+01
48	EC	0.5	0.2	30	v2	2.65E+06	4.50E+05	1.50E+05	2.11E+04	4.82E+03	1.17E+03	6.25E-02	9.31E+01	9.31E+01	1.65E+01	3.40E+01	1.70E-01	5.66E-02	7.97E-03	2.13E+01	1.72E+01
64	HTP_Eco	1	0.2	30	v2	2.27E+05	3.27E+03	2.79E+03	4.47E+03	1.00E-02	1.00E-02	6.25E-02	6.04E+01	5.23E+01	4.53E+01	5.23E+01	1.44E-02	1.23E-02	1.97E-02	5.09E+01	2.64E+01
62	HTP_Std	1	0.2	30	v2	1.45E+04	9.29E+03	1.06E+04	8.99E+03	1.00E-02	1.00E-02	6.25E-02	5.23E+01	4.53E+01	5.23E+01	4.53E+01	6.41E-01	7.31E-01	6.20E-01	5.34E+00	1.88E+00
39	EC	1	0.2	30	v2	6.61E+05	3.61E+04	1.25E+03	3.16E+03	1.24E+03	1.00E-02	6.25E-02	1.24E+02	3.40E+01	4.53E+01	1.08E+01	5.46E-02	1.89E-03	4.78E-03	3.49E+01	3.76E+01
61	HTP_Eco	2	0.2	30	v2	9.62E+04	5.82E+03	4.59E+03	4.81E+03	1.00E-02	1.00E-02	6.25E-02	6.04E+01	5.23E+01	5.23E+01	3.92E+01	6.05E-02	4.77E-02	5.00E-02	3.37E+01	1.83E+01
56	HTP_Std	2	0.2	30	v2	1.37E+05	7.91E+03	1.18E+03	2.09E+03	8.68E+01	1.00E-02	6.25E-02	8.06E+01	8.06E+01	1.08E+01	1.08E+01	5.77E-02	8.61E-03	1.53E-02	3.42E+01	2.85E+01
45	EC	2	0.2	30	v2	5.20E+05	2.40E+05	2.03E+05	1.76E+03	1.00E-02	5.66E+03	6.25E-02	1.08E+02	1.08E+02	9.31E+01	1.08E+01	4.62E-01	3.90E-01	3.38E-03	9.28E+00	5.64E+00
55	HTP_Eco	0.5	1	30	v2	1.24E+06	3.54E+03	1.70E+03	4.07E+03	1.00E-02	1.00E-02	6.25E-02	9.31E+01	6.98E+01	5.23E+01	6.98E+01	2.85E-03	1.37E-03	3.28E-03	7.03E+01	3.96E+01
47	HTP_Std	0.5	1	30	v2	1.18E+06	1.13E+05	6.49E+03	5.60E+03	1.22E+03	1.00E-02	6.25E-02	1.08E+02	8.06E+01	6.98E+01	6.98E+01	9.58E-02	5.50E-03	4.75E-03	2.82E+01	3.12E+01
63	EC	0.5	1	30	v2	5.67E+06	1.31E+05	4.06E+04	1.42E+04	3.14E+03	1.92E+02	5.07E+01	1.24E+02	3.40E+01	3.40E+01	3.40E+01	2.31E-02	7.16E-03	2.50E-03	4.52E+01	2.96E+01
40	HTP_Eco	1	1	30	v2	1.18E+05	2.23E+03	1.91E+03	7.19E+03	1.00E-02	1.00E-02	6.25E-02	6.04E+01	3.40E+01	3.40E+01	4.53E+01	1.89E-02	1.62E-02	6.09E-02	4.76E+01	2.47E+01

53	HTP_Std	1	1	30	v2	2.21E+05	5.54E+03	1.03E+03	2.86E+03	1.00E-02	1.00E-02	6.25E-02	6.04E+00	8.06E+01	6.04E+01	6.98E+01	2.51E-02	4.66E-03	1.29E-02	4.42E+01	3.22E+01
54	EC	1	1	30	v2	1.53E+06	1.50E+05	2.11E+03	2.30E+03	6.11E+02	1.00E-02	6.25E-02	9.31E+01	1.91E+01	2.94E+01	1.08E+01	9.80E-02	1.38E-03	1.50E-03	2.79E+01	3.95E+01
46	HTP_Eco	2	1	30	v2	1.02E+05	5.73E+04	4.61E+04	4.84E+03	1.00E-02	2.07E+02	6.25E-02	8.06E+01	8.06E+01	8.06E+01	6.04E+01	5.62E-01	4.52E-01	4.74E-02	6.92E+00	4.76E+00
71	HTP_Std	2	1	30	v2	1.55E+04	1.29E+03	3.88E+03	4.11E+03	1.00E-02	6.27E+01	2.63E+00	8.06E+01	1.08E+01	8.06E+01	6.98E+01	8.32E-02	2.50E-01	2.65E-01	2.98E+01	8.31E+00
72	EC	2	1	30	v2	2.24E+05	8.95E+04	4.96E+04	7.59E+03	3.09E+02	1.00E-02	6.25E-02	3.40E+01	3.40E+01	3.40E+01	3.40E+01	4.00E-01	2.21E-01	3.39E-02	1.10E+01	9.05E+00
44	HTP_Eco	0.5	0.2	70	v2	2.04E+06	3.66E+03	5.64E+02	1.22E+03	1.00E-02	1.00E-02	6.25E-02	9.31E+01	6.98E+01	1.08E+01	1.08E+01	1.79E-03	2.77E-04	5.96E-04	7.59E+01	4.92E+01
43	HTP_Std	0.5	0.2	70	v2	1.31E+06	5.27E+03	5.79E+02	3.27E+03	1.46E+02	1.00E-02	6.25E-02	1.24E+02	8.06E+01	1.08E+01	6.04E+01	4.02E-03	4.42E-04	2.50E-03	6.62E+01	4.63E+01
57	EC	0.5	0.2	70	v2	2.53E+06	1.25E+04	9.87E+02	2.86E+03	5.63E+02	1.00E-02	1.38E+01	1.43E+02	9.31E+00	1.08E+01	1.08E+01	4.94E-03	3.90E-04	1.13E-03	6.37E+01	4.71E+01
49	HTP_Eco	1	0.2	70	v2	4.26E+05	7.14E+04	9.72E+04	5.13E+03	1.00E-02	1.85E+03	6.25E-02	1.08E+02	9.31E+01	9.31E+01	6.98E+01	1.68E-01	2.28E-01	1.21E-02	2.14E+01	8.87E+00
50	HTP_Std	1	0.2	70	v2	3.66E+05	9.57E+04	1.92E+04	1.40E+03	2.04E+03	1.00E-02	6.25E-02	1.24E+02	1.24E+02	1.43E+02	9.31E+01	2.61E-01	5.25E-02	3.83E-03	1.61E+01	1.77E+01
69	EC	1	0.2	70	v2	1.91E+06	6.25E+04	2.36E+03	6.46E+03	4.08E+03	1.00E-02	6.25E-02	1.43E+02	6.04E+00	3.40E+01	3.40E+01	3.27E-02	1.24E-03	3.38E-03	4.10E+01	4.02E+01
70	HTP_Eco	2	0.2	70	v2	3.62E+04	3.02E+04	1.45E+04	2.38E+03	6.63E+02	2.11E+02	6.25E-02	1.08E+02	1.08E+02	9.31E+01	6.98E+01	8.34E-01	4.01E-01	6.57E-02	2.17E+00	5.49E+00
68	HTP_Std	2	0.2	70	v2	9.36E+03	8.41E+03	8.29E+03	8.85E+03	1.00E-02	1.00E-02	1.85E+01	5.23E+01	5.23E+01	5.23E+01	5.23E+01	8.99E-01	8.86E-01	9.46E-01	1.28E+00	7.28E-01
51	EC	2	0.2	70	v2	7.00E+03	4.15E+03	2.00E+03	1.64E+03	1.00E-02	1.00E-02	6.25E-02	1.08E+02	1.08E+01	1.08E+01	1.08E+01	5.93E-01	2.86E-01	2.34E-01	6.27E+00	7.52E+00
58	HTP_Eco	0.5	1	70	v2	8.73E+05	4.06E+03	2.13E+03	1.37E+03	1.00E-02	6.52E+01	6.25E-02	1.24E+02	8.06E+01	9.31E+00	1.08E+01	4.65E-03	2.44E-03	1.57E-03	6.44E+01	3.61E+01
65	HTP_Std	0.5	1	70	v2	2.75E+06	7.01E+03	5.68E+02	4.06E+03	3.12E+02	1.00E-02	6.95E+00	1.08E+02	8.06E+01	1.08E+01	5.23E+01	2.55E-03	2.06E-04	1.48E-03	7.17E+01	5.09E+01
66	EC	0.5	1	70	v2	6.76E+06	6.09E+04	2.76E+03	1.08E+04	2.86E+03	2.01E+01	9.46E+01	1.08E+02	9.31E+01	1.08E+01	1.08E+01	9.01E-03	4.08E-04	1.59E-03	5.65E+01	4.68E+01
67	HTP_Eco	1	1	70	v2	2.90E+04	7.06E+02	1.01E+03	4.31E+03	1.00E-02	1.00E-02	6.25E-02	6.04E+01	1.08E+01	1.08E+01	5.23E+01	2.43E-02	3.48E-02	1.49E-01	4.46E+01	2.01E+01
59	HTP_Std	1	1	70	v2	2.60E+05	1.40E+04	1.55E+03	3.02E+03	7.90E+02	1.00E-02	3.69E+01	1.24E+02	9.31E+01	1.08E+01	8.06E+01	5.38E-02	5.96E-03	1.16E-02	3.51E+01	3.07E+01
60	EC	1	1	70	v2	9.76E+05	3.27E+05	3.34E+04	5.61E+03	8.87E+03	8.18E+02	5.49E+00	1.08E+02	1.08E+02	3.40E+01	3.40E+01	3.35E-01	3.42E-02	5.75E-03	1.31E+01	2.02E+01
52	HTP_Eco	2	1	70	v2	1.25E+05	7.09E+04	1.98E+04	1.44E+03	9.96E+02	9.14E+02	6.25E-02	1.08E+02	9.31E+01	6.98E+01	3.92E+01	5.67E-01	1.58E-01	1.15E-02	6.80E+00	1.11E+01
41	HTP_Std	2	1	70	v2	2.46E+04	3.83E+03	1.76E+03	7.16E+03	1.00E-02	1.00E-02	6.25E-02	8.06E+01	5.23E+01	3.92E+01	6.04E+01	1.56E-01	7.15E-02	2.91E-01	2.23E+01	1.58E+01
42	EC	2	1	70	v2	4.98E+05	1.48E+05	8.11E+03	1.17E+04	1.01E+04	1.00E-02	7.01E+01	1.24E+02	6.04E+00	3.40E+01	3.40E+01	2.97E-01	1.63E-02	2.36E-02	1.46E+01	2.47E+01
73	HTP_Eco	0.5	0.2	30	v3	1.14E+06	1.28E+04	7.09E+02	2.00E+03	1.00E-02	1.00E-02	6.25E-02	9.31E+01	6.98E+01	5.23E+01	5.23E+01	1.12E-02	6.22E-04	1.76E-03	5.39E+01	4.43E+01
74	HTP_Std	0.5	0.2	30	v3	2.35E+06	4.10E+03	1.18E+03	5.44E+03	1.29E+02	1.00E-02	6.25E-02	1.08E+02	6.98E+01	6.98E+01	6.98E+01	1.74E-03	5.02E-04	2.31E-03	7.62E+01	4.56E+01
84	EC	0.5	0.2	30	v3	5.17E+06	1.13E+04	2.80E+03	9.93E+03	5.13E+02	1.00E-02	3.52E+01	1.08E+02	2.94E+01	3.40E+01	3.40E+01	2.19E-03	5.42E-04	1.92E-03	7.35E+01	4.51E+01

100	HTP_Eco	1	0.2	30	v3	8.26E+03	7.74E+03	7.94E+03	7.24E+03	1.00E-02	1.00E-02	6.25E-02	5.23E+01	5.23E+01	5.23E+01	5.23E+01	9.37E-01	9.61E-01	8.77E-01	7.80E-01	2.37E-01	
98	HTP_Std	1	0.2	30	v3	1.58E+04	1.17E+04	4.19E+03	5.34E+03	1.00E-02	1.00E-02	6.25E-02	6.04E+01	5.23E+01	5.23E+01	4.53E+01	7.41E-01	2.65E-01	3.38E-01	3.61E+00	7.96E+00	
75	EC	1	0.2	30	v3	2.83E+06	3.78E+05	3.39E+03	5.12E+03	1.58E+04	4	6.54E+01	6.25E-02	1.24E+02	9.31E+01	3.40E+01	1.08E+01	1.34E-01	1.20E-03	1.81E-03	2.42E+01	4.04E+01
97	HTP_Eco	2	0.2	30	v3	6.70E+03	6.24E+03	6.31E+03	6.11E+03	1.00E-02	1.00E-02	6.25E-02	3.92E+01	3.92E+01	3.92E+01	3.92E+01	9.31E-01	9.42E-01	9.12E-01	8.54E-01	3.60E-01	
92	HTP_Std	2	0.2	30	v3	3.04E+03	1.67E+03	1.63E+03	1.58E+03	1.00E-02	1.00E-02	6.25E-02	1.08E+01	1.08E+01	1.08E+01	9.31E+00	5.49E-01	5.36E-01	5.19E-01	7.19E+00	3.74E+00	
81	EC	2	0.2	30	v3	5.35E+05	3.89E+05	1.13E+05	1.41E+04	2.50E+03	3	1.41E+03	6.25E-02	1.24E+02	1.08E+02	1.08E+02	3.40E+01	7.27E-01	2.11E-01	2.64E-02	3.82E+00	9.33E+00
91	HTP_Eco	0.5	1	30	v3	1.35E+05	5.48E+03	1.15E+03	1.08E+03	3.54E+01	1	1.00E-02	6.25E-02	5.23E+01	3.92E+01	1.08E+01	1.08E+01	4.06E-02	8.52E-03	8.00E-03	3.85E+01	2.86E+01
83	HTP_Std	0.5	1	30	v3	1.32E+06	4.17E+03	5.93E+02	3.76E+03	1.20E+03	2	1.00E-02	6.25E-02	9.31E+01	8.06E+01	1.08E+01	6.98E+01	3.16E-03	4.49E-04	2.85E-03	6.91E+01	4.62E+01
99	EC	0.5	1	30	v3	4.36E+06	1.37E+05	1.97E+04	1.25E+04	3.78E+03	3	1.00E-02	6.25E-02	1.24E+02	1.08E+02	3.40E+01	3.40E+01	3.14E-02	4.52E-03	2.88E-03	4.15E+01	3.24E+01
76	HTP_Eco	1	1	30	v3	2.70E+05	8.32E+02	1.20E+03	3.24E+03	1.00E-02	1.00E-02	6.25E-02	6.04E+01	1.08E+01	1.08E+01	5.23E+01	3.08E-03	4.44E-03	1.20E-02	6.94E+01	3.25E+01	
89	HTP_Std	1	1	30	v3	9.49E+04	3.29E+03	4.09E+02	1.10E+03	1.54E+01	1	1.00E-02	6.25E-02	6.98E+01	6.04E+01	6.04E+01	6.04E+01	3.47E-02	4.31E-03	1.16E-02	4.03E+01	3.27E+01
90	EC	1	1	30	v3	5.77E+05	7.23E+04	1.23E+03	1.82E+03	4.17E+03	3	1.00E-02	6.25E-02	1.08E+02	2.94E+01	3.40E+01	1.08E+01	1.25E-01	2.13E-03	3.16E-03	2.49E+01	3.69E+01
82	HTP_Eco	2	1	30	v3	7.45E+03	2.66E+03	2.50E+03	3.64E+03	1.00E-02	1.00E-02	6.25E-02	8.06E+01	5.23E+01	5.23E+01	5.23E+01	3.57E-01	3.36E-01	4.88E-01	1.24E+01	6.55E+00	
107	HTP_Std	2	1	30	v3	2.13E+05	8.28E+02	5.80E+02	7.97E+03	1.00E-02	1.00E-02	6.25E-02	6.04E+01	1.08E+01	1.08E+01	5.23E+01	3.89E-03	2.72E-03	3.74E-02	6.66E+01	3.54E+01	
108	EC	2	1	30	v3	3.41E+05	9.17E+04	5.93E+04	1.48E+04	1.00E-02	1.00E-02	6.25E-02	1.08E+02	1.08E+02	3.40E+01	3.40E+01	2.69E-01	1.74E-01	4.33E-02	1.58E+01	1.05E+01	
79	HTP_Eco	0.5	0.2	70	v3	1.73E+06	3.73E+03	9.89E+02	2.06E+03	2.41E+01	1	1.00E-02	6.25E-02	9.31E+01	6.04E+01	1.08E+01	4.53E+01	2.16E-03	5.72E-04	1.19E-03	7.37E+01	4.48E+01
80	HTP_Std	0.5	0.2	70	v3	5.31E+05	9.89E+02	6.11E+02	2.91E+03	1.00E-02	1.00E-02	6.25E-02	9.31E+01	1.08E+01	1.08E+01	6.04E+01	1.86E-03	1.15E-03	5.47E-03	7.54E+01	4.06E+01	
93	EC	0.5	0.2	70	v3	5.67E+05	3.12E+04	3.58E+03	1.88E+03	7.20E+02	2	1.00E-02	6.25E-02	1.08E+02	3.40E+01	3.40E+01	1.08E+01	5.50E-02	6.31E-03	3.31E-03	3.48E+01	3.04E+01
85	HTP_Eco	1	0.2	70	v3	1.48E+05	1.32E+03	7.54E+02	1.87E+03	1.00E-02	1.00E-02	6.25E-02	9.31E+01	1.08E+01	1.08E+01	4.53E+01	8.92E-03	5.09E-03	1.27E-02	5.66E+01	3.17E+01	
86	HTP_Std	1	0.2	70	v3	6.45E+03	8.18E+02	7.50E+02	3.91E+03	1.00E-02	1.00E-02	6.25E-02	9.31E+00	1.08E+01	1.08E+01	6.98E+01	1.27E-01	1.16E-01	6.07E-01	2.48E+01	1.29E+01	
105	EC	1	0.2	70	v3	1.55E+06	2.80E+03	1.98E+03	1.11E+04	1.00E-02	1.00E-02	6.25E-02	1.24E+02	1.08E+01	1.08E+01	3.40E+01	1.81E-03	1.28E-03	7.17E-03	7.58E+01	4.00E+01	
106	HTP_Eco	2	0.2	70	v3	1.60E+04	5.32E+03	9.27E+03	5.36E+03	1.00E-02	1.00E-02	4.46E+01	6.04E+01	6.04E+01	6.04E+01	5.23E+01	3.33E-01	5.79E-01	3.35E-01	1.32E+01	3.27E+00	
104	HTP_Std	2	0.2	70	v3	8.62E+03	5.88E+03	6.06E+03	6.24E+03	1.00E-02	1.00E-02	6.25E-02	3.92E+01	6.04E+01	6.04E+01	5.23E+01	6.82E-01	7.03E-01	7.24E-01	4.59E+00	2.11E+00	
87	EC	2	0.2	70	v3	1.45E+06	4.95E+03	9.17E+03	8.26E+03	1.00E-02	3.58E+02	6.25E-02	1.24E+02	1.08E+01	9.31E+00	1.08E+01	3.41E-03	6.32E-03	5.70E-03	6.82E+01	3.04E+01	
94	HTP_Eco	0.5	1	70	v3	4.25E+05	4.83E+03	4.84E+02	2.58E+03	1.00E-02	1.00E-02	7.03E+00	1.08E+02	6.98E+01	9.31E+00	5.23E+01	1.14E-02	1.14E-03	6.08E-03	5.37E+01	4.07E+01	
101	HTP_Std	0.5	1	70	v3	2.44E+06	2.05E+04	1.07E+03	6.81E+03	3.30E+02	2	1.00E-02	6.25E-02	9.31E+01	6.98E+01	1.08E+01	5.23E+01	8.40E-03	4.39E-04	2.79E-03	5.74E+01	4.64E+01

102	EC	0.5	1	70	v3	6.15E+06	9.49E+04	6.24E+03	1.20E+04	7.62E+03	1.00E-02	6.25E-02	1.08E+02	6.04E+00	3.40E+01	3.40E+01	1.54E-02	1.01E-03	1.95E-03	5.01E+01	4.14E+01
103	HTP_Eco	1	1	70	v3	4.05E+05	3.01E+03	7.35E+02	2.67E+03	5.93E+01	1.00E-02	6.25E-02	8.06E+01	9.31E+00	1.08E+01	3.92E+01	7.43E-03	1.82E-03	6.58E-03	5.88E+01	3.79E+01
95	HTP_Std	1	1	70	v3	3.87E+05	6.96E+03	1.67E+03	3.06E+03	9.30E+01	3.86E+01	6.25E-02	9.31E+01	8.06E+01	9.31E+00	6.04E+01	1.80E-02	4.32E-03	7.91E-03	4.82E+01	3.27E+01
96	EC	1	1	70	v3	1.77E+06	4.90E+04	1.23E+03	7.20E+03	2.98E+03	1.00E-02	6.25E-02	1.24E+02	6.04E+00	1.08E+01	3.40E+01	2.77E-02	6.95E-04	4.07E-03	4.30E+01	4.36E+01
88	HTP_Eco	2	1	70	v3	3.51E+03	2.90E+03	2.91E+03	2.59E+03	1.00E-02	1.00E-02	6.25E-02	5.23E+01	5.23E+01	5.23E+01	5.23E+01	8.26E-01	8.29E-01	7.37E-01	2.29E+00	1.12E+00
77	HTP_Std	2	1	70	v3	6.61E+03	4.20E+03	4.35E+03	4.28E+03	1.00E-02	1.00E-02	6.25E-02	1.08E+01	6.04E+01	6.04E+01	6.04E+01	6.35E-01	6.58E-01	6.47E-01	5.44E+00	2.51E+00
78	EC	2	1	70	v3	5.18E+05	4.43E+05	2.73E+05	1.41E+04	6.49E+02	1.60E+03	6.25E-02	1.24E+02	1.24E+02	1.24E+02	3.40E+01	8.55E-01	5.27E-01	2.73E-01	1.88E+00	3.84E+00