

**Supplementary material for
Enhanced receptor modeling using expanded equations with parametric
variables for secondary components of PM_{2.5}**

Ho-Tang Liao^{1,2}, Ming-Tung Chuang¹, Ping-Wen Tsai¹, Charles C.-K. Chou^{1*}, Chang-Fu Wu^{2,3*}

¹ *Research Center for Environmental Changes, Academia Sinica, Taipei 11529, Taiwan.*

² *Institute of Environmental and Occupational Health Sciences, National Taiwan University, Taipei 10055, Taiwan.*

³ *Department of Public Health, National Taiwan University, Taipei 10055, Taiwan.*

* Corresponding author. Tel: 886-2-2787-5889 ext.: 254; Fax: 886-2-2783-3584

E-mail address: ckchou@rcec.sinica.edu.tw (C. C.-K. Chou)

* Corresponding author. Tel: 886-2-3366-8096; Fax: 886-2-3366-8096

E-mail address: changfu@ntu.edu.tw (C.-F. Wu)

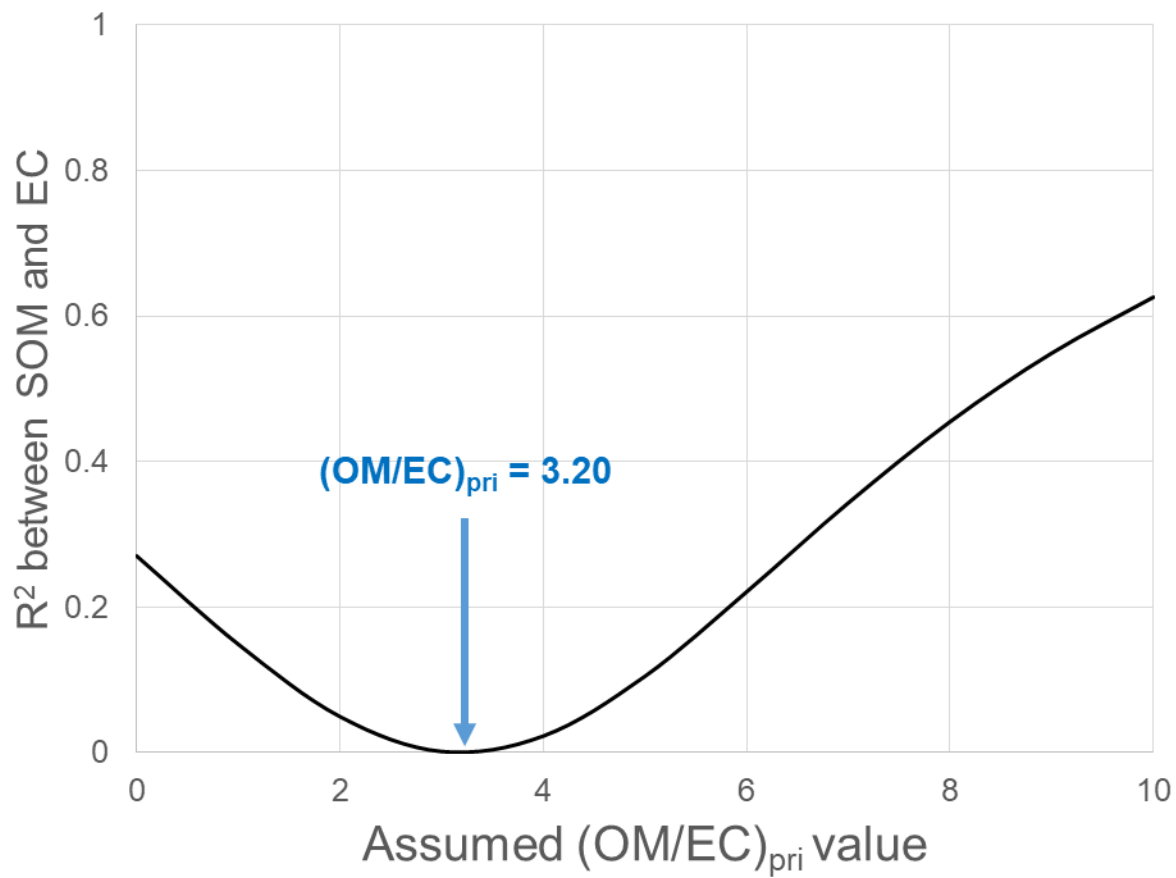


Fig. S1. Determination of (OM/EC)_{pri} using the minimum R squared (MRS) method.

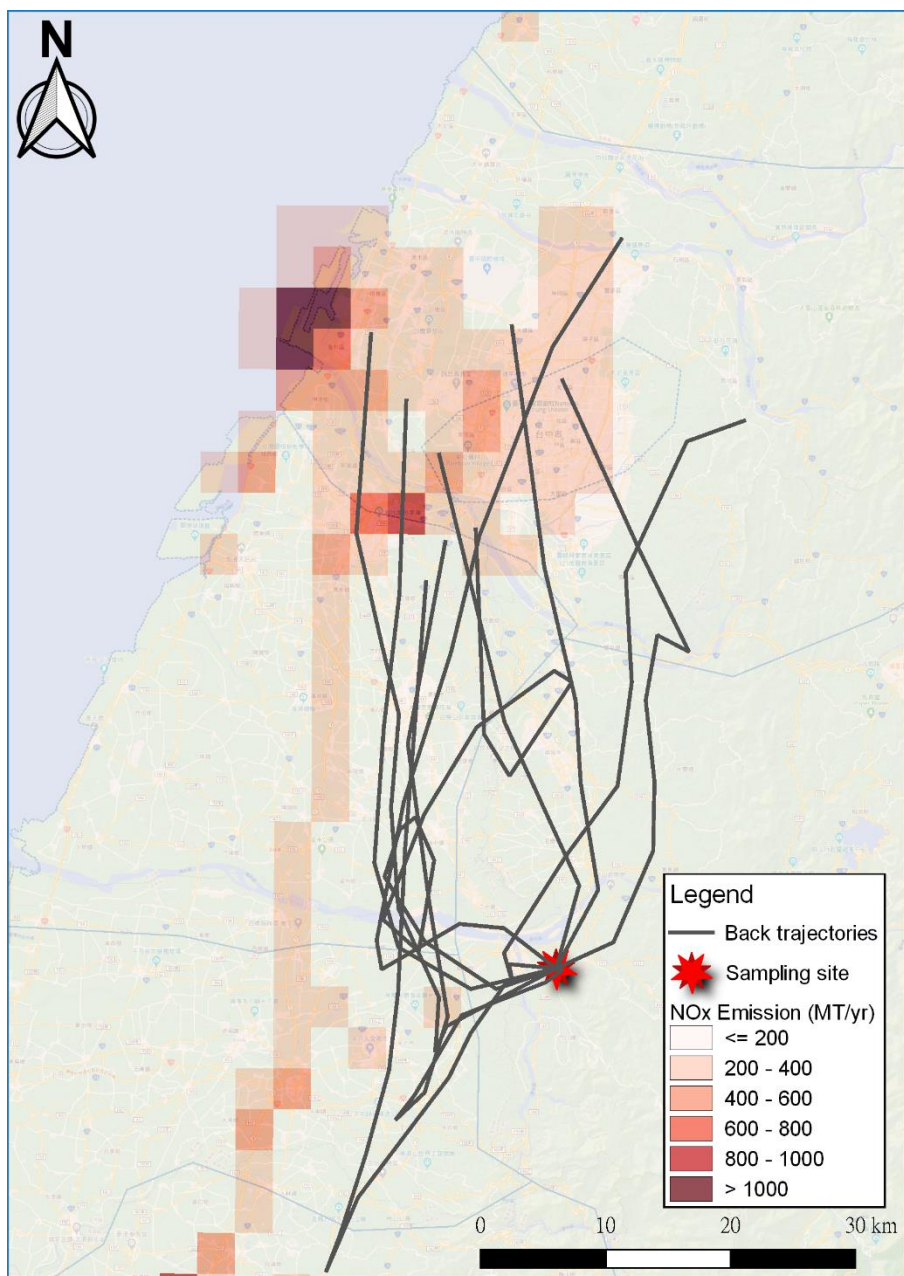


Fig. S2. Association of twenty-four-hour back trajectories corresponding to the top ten contribution periods of Factor04 (nitrate-rich secondary aerosol) during the sampling period with NO_x emission inventory data obtained from Taiwan Emission Data System (TEDS 10.0).