

Supplementary Material

Table S1. Mean concentrations and standard deviation for the different periods analysed.

NO₂ mean concentrations ($\mu\text{g}\cdot\text{m}^{-3}$)						
Station	January 24th to March 20th, 2019	March 20th to May 14th, 2019	January 24th to March 20th, 2020	March 20th to May 14th, 2020	Percentage of variation between means from 2019 and 2020 for January 24th to March 20th	Percentage of variation between means from 2019 and 2020 for March 20th to May 14th
DS	-	24.5 ± 3.8	19.0 ± 2.4	21.8 ± 8.9	-	-11 %
LM	35.3 ± 3.3	39.7 ± 3.4	17.9 ± 5.0	15.4 ± 2.0	-49 %	-61 %
CN	30.2 ± 3.9	37.4 ± 6.0	29.5 ± 3.2	25.3 ± 9.1	-2.3 %	-32 %
CR	42.0 ± 4.3	39.5 ± 5.8	25.8 ± 3.6	31.5 ± 15.0	-38 %	-20 %
LB	39.3 ± 8.1	40.3 ± 9.8	34.0 ± 11.6	24.4 ± 13.9	-13 %	-39 %

PM_{2.5} mean concentration ($\mu\text{g}\cdot\text{m}^{-3}$)						
Station	January 24th to March 20th, 2019	March 20th to May 14th, 2019	January 24th to March 20th, 2020	March 20th to May 14th, 2020	Percentage of variation between means from 2019 and 2020 for January 24th to March 20th	Percentage of variation between means from 2019 and 2020 for March 20th to May 14th
DS	10.5 ± 2.1	13.7 ± 4.6	9.70 ± 2.7	8.95 ± 4.6	-8 %	-35 %

LM	13.3 ± 7.7	17.9 ± 6.1	20.5 ± 7.1	29.3 ± 10.1	+54 %	+64 %
----	------------	------------	------------	-------------	-------	-------

PM ₁₀ mean concentration (µg.m ⁻³)						
Station	January 24th to March 20th, 2019	March 20th to May 14th, 2019	January 24th to March 20th, 2020	March 20th to May 14th, 2020	Percentage of variation between means from 2019 and 2020 for January 24th to March 20th	Percentage of variation between means from 2019 and 2020 for March 20th to May 14th
DS	16.0 ± 3.2	21.0 ± 7.9	14.9 ± 3.5	13.6 ± 6.2	-7 %	-35 %
LM	35.3 ± 10.6	39.2 ± 8.9	46.7 ± 11.8	42.5 ± 14.4	+32 %	+8 %
CN	22.5 ± 4.7	22.9 ± 2.7	19.2 ± 2.9	15.4 ± 4.3	-14 %	-32 %
CR	29.7 ± 3.6	28.4 ± 6.1	19.8 ± 6.2	13.2 ± 4.7	-33 %	-53 %
LB	30.3 ± 5.7	31.4 ± 4.9	8.6 ± 1.1	16.3 ± 5.2	-71 %	-48 %

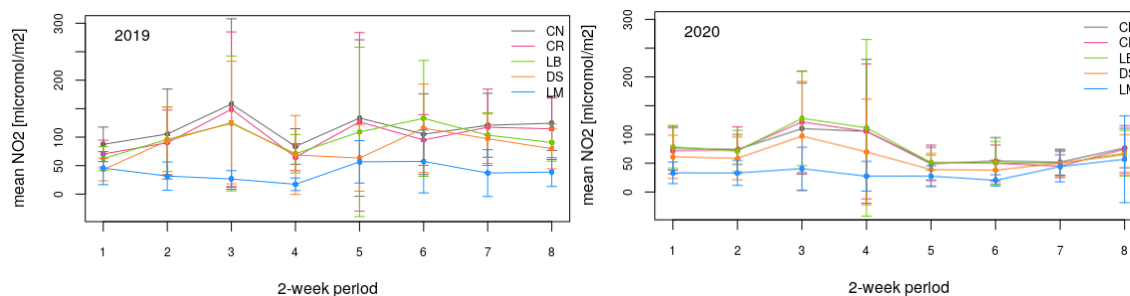


Fig. S1. Nitrogen dioxide 2-week means and standard deviations at the monitoring stations locations, obtained by TROPOMI/Sentinel-5p. The fifth 2-week corresponds to the one starting at the lockdown date in Argentina.

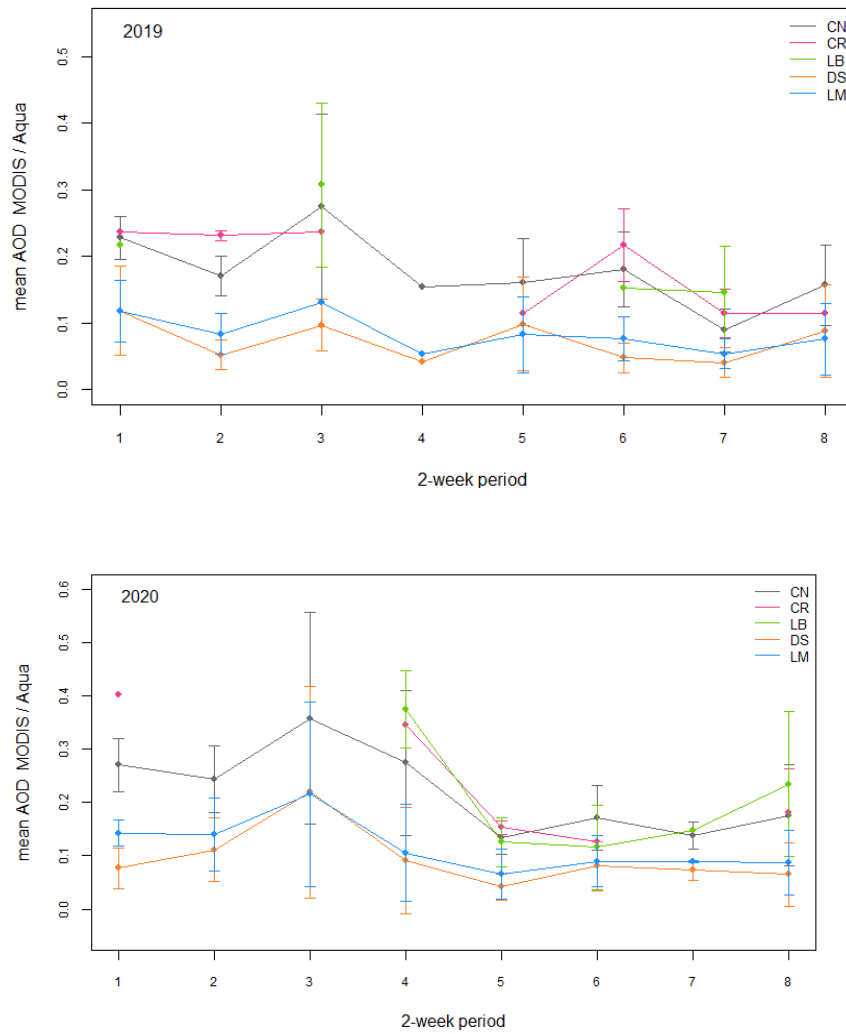


Fig. S2. Aerosol Optical Depth 2-week means and standard deviations at the monitoring stations locations, obtained by MAIAC-MODIS/Aqua. The fifth 2-week corresponds to the one starting at the lockdown date in Argentina.