

Figure S1: Zonal wind observed at (a) 850 hPa, (b) 700 hPa and (c) 500 hPa during PLD (8-21 March 2020) period using ERA-5 reanalysis. (d)-(f) same as (a)-(c) but during DLD (25 March to 7 April 2020). Arrows show wind vectors.

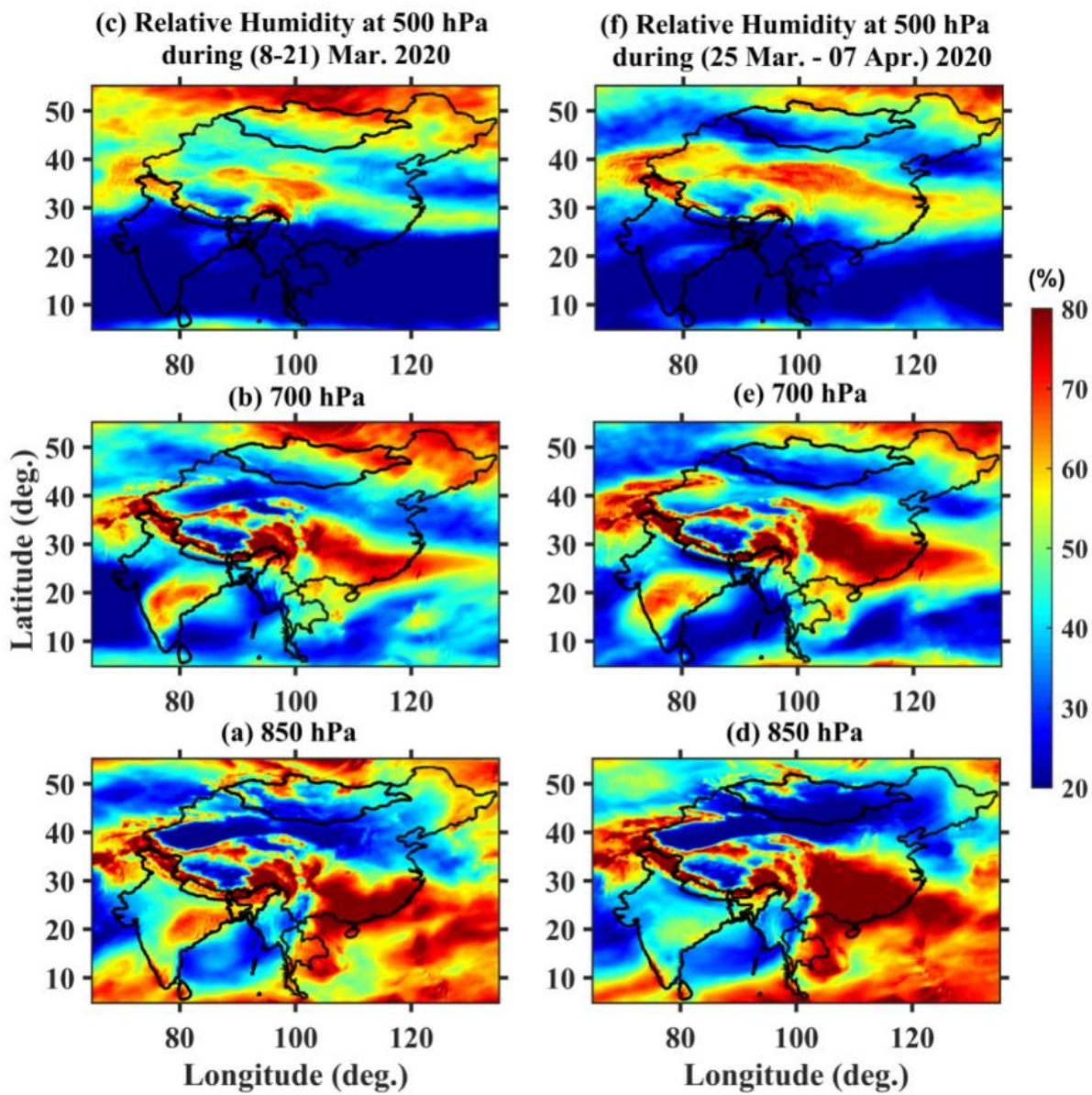


Figure S2: Relative humidity observed at (a) 850 hPa, (b) 700 hPa and (c) 500 hPa during PLD (8-21 March 2020) period by ERA-5 reanalysis. (d)-(f) same as (a)-(c) but during DLD (25 March to 7 April 2020).