

**Chemical Characteristics, Spatiotemporal Distribution, and
Source Apportionment of PM_{2.5} surrounding Industrial
Complexes in Southern Kaohsiung**

Supplementary Materials

Huazhen Shen^{1,2}, Po-Hung Cheng², Chung-Shin Yuan^{2},
Zong-Mou Yang², Chung-Min Hung², Iau-Ren Ie²*

¹College of Chemical Engineering, Huaqiao University, Xiamen 361021,
China

²Institute of Environmental Engineering, National Sun-Yat Sen
University, Kaohsiung, Taiwan 80424, ROC

*** Corresponding Author**

Chung-Shin Yuan

Tel: (+886-7-5252000 ext 4409), Fax: (+886-7-5254409)

E-mail: yesngi@nsysu.edu.tw

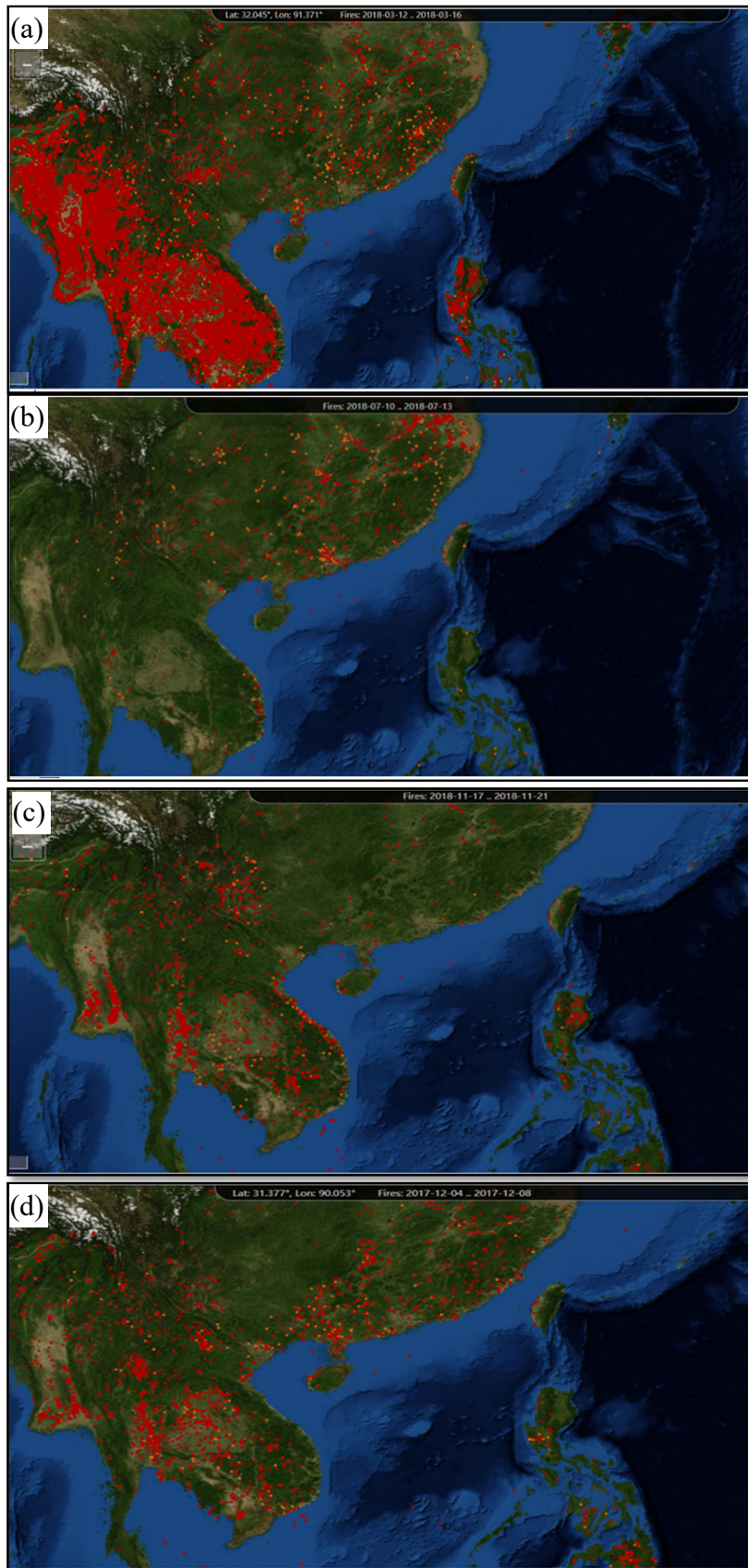


Figure S-1. Fire maps of Indochina Peninsula during the sampling periods of (a) spring, (b) summer, (c) fall, and (d) winter, respectively.