

Supplementary Materials

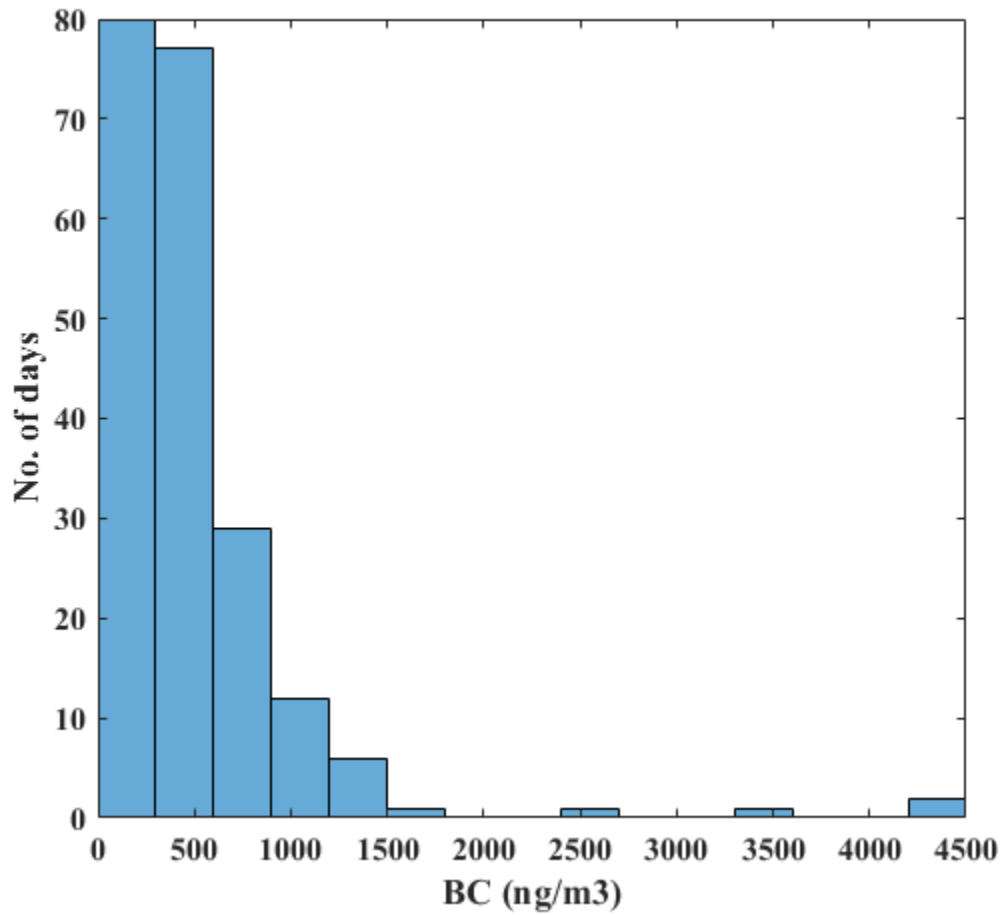


Fig S1. Frequency distribution plot for daily average BC mass concentration during October 2016-May 2017.

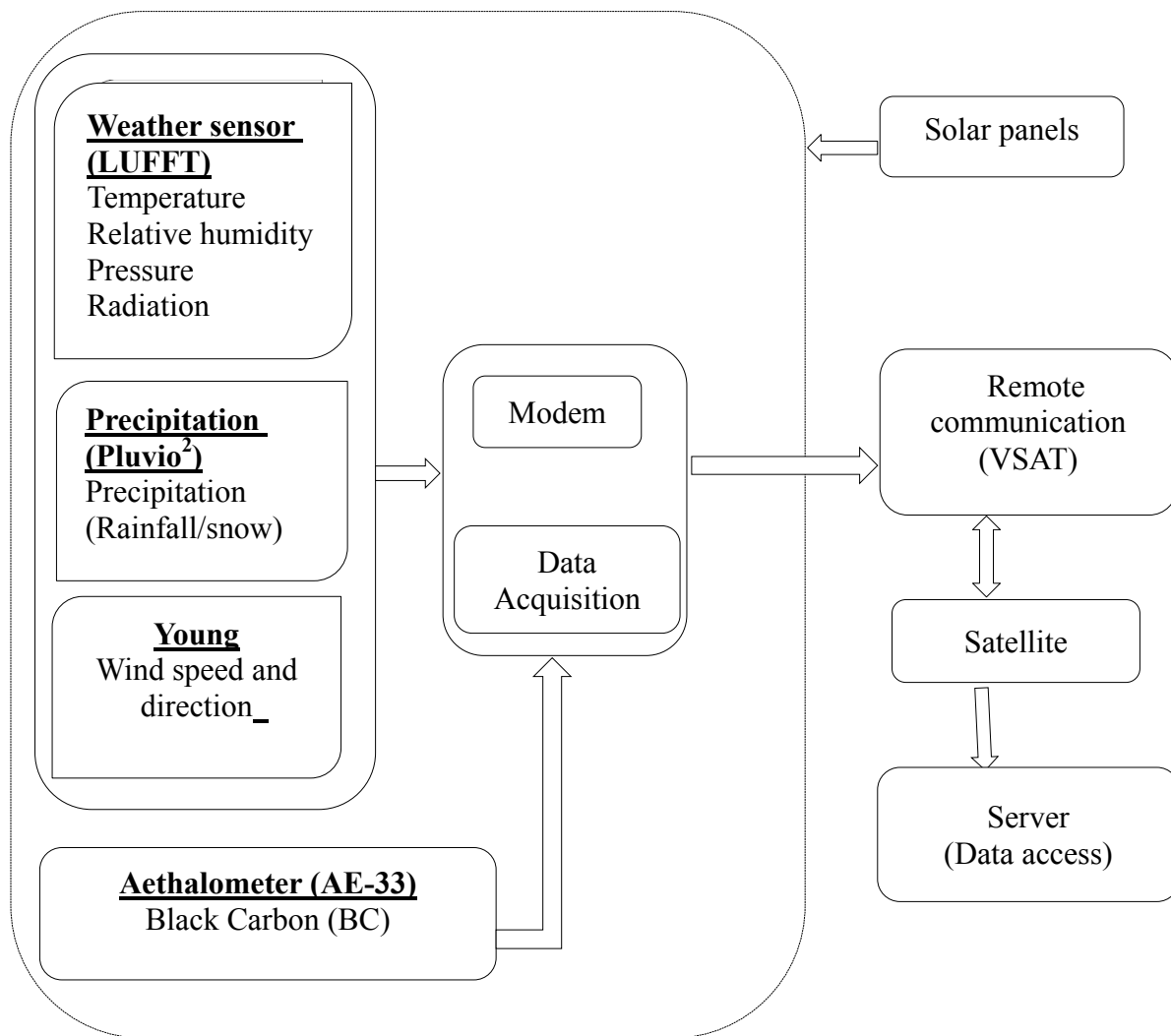


Fig S2. Flow diagram showing data transmission pattern of autonomous BC monitoring station at the observation site

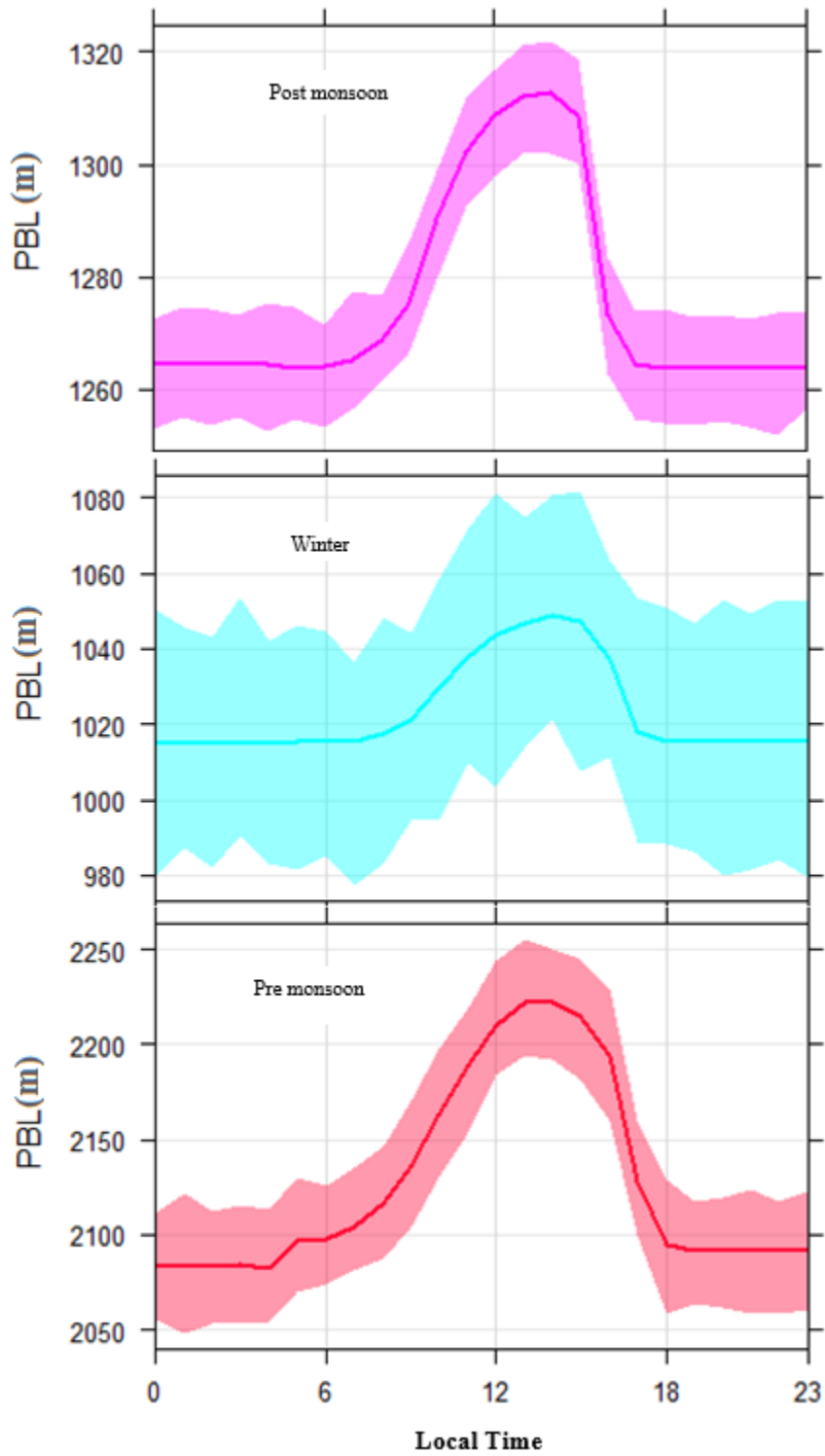


Fig S3. Seasonal, diurnal variation of planetary boundary layer height in the low laying plain regions (80W – 85E, 27.25N - 26.25S)