

Fig. 2. Overall PM_{2.5} composition, Taft 2009 to 2013

ACCEPTED MANUSCRIPT

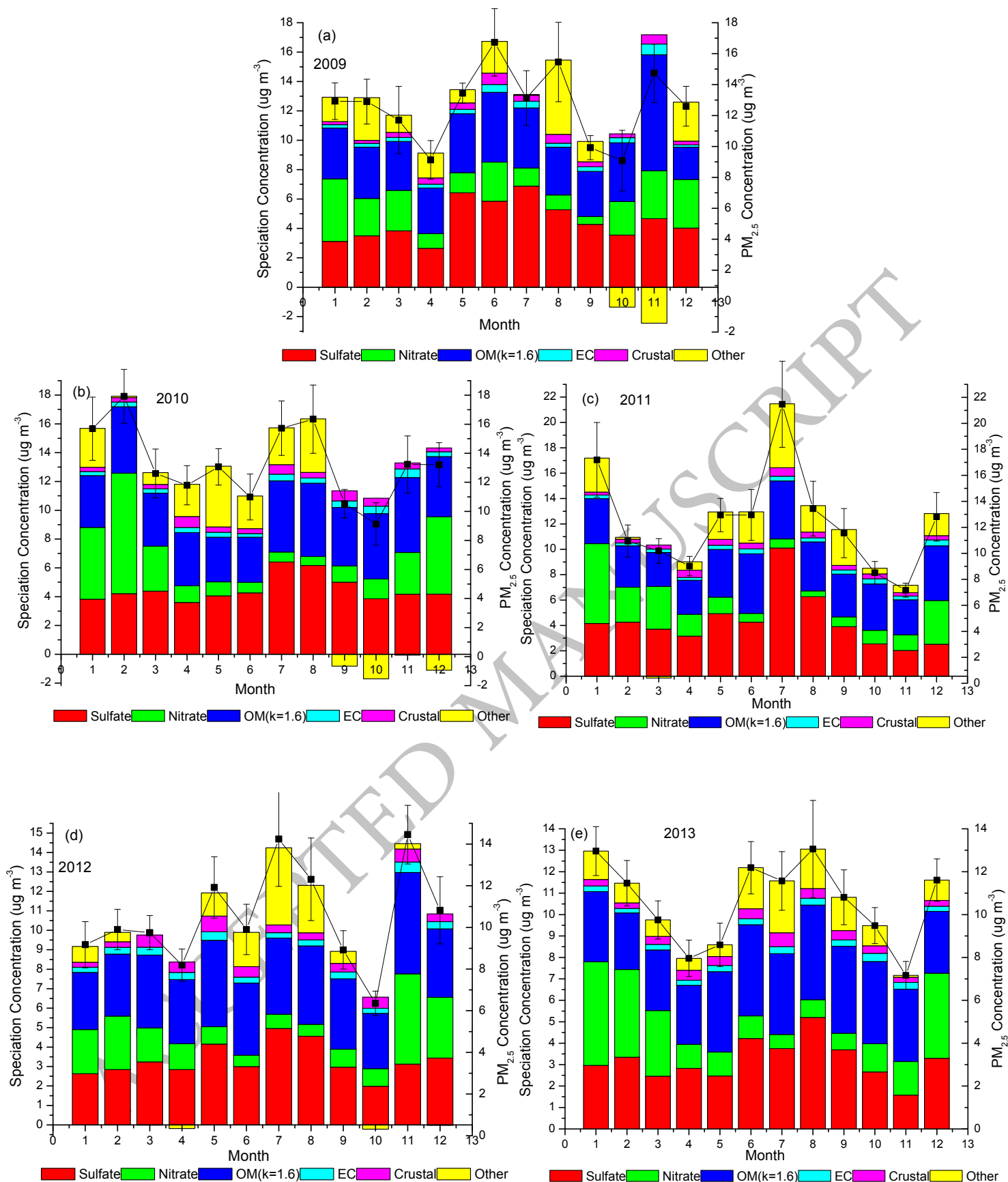


Fig. 3. PM_{2.5} speciation monthly data, Taft 2009 to 2013 , (a):2009, (b):2010, (C):2011, (d):2012 and (e):2013. The X-axis represents the twelve months from January to December, dots represent averaged PM_{2.5} concentration.

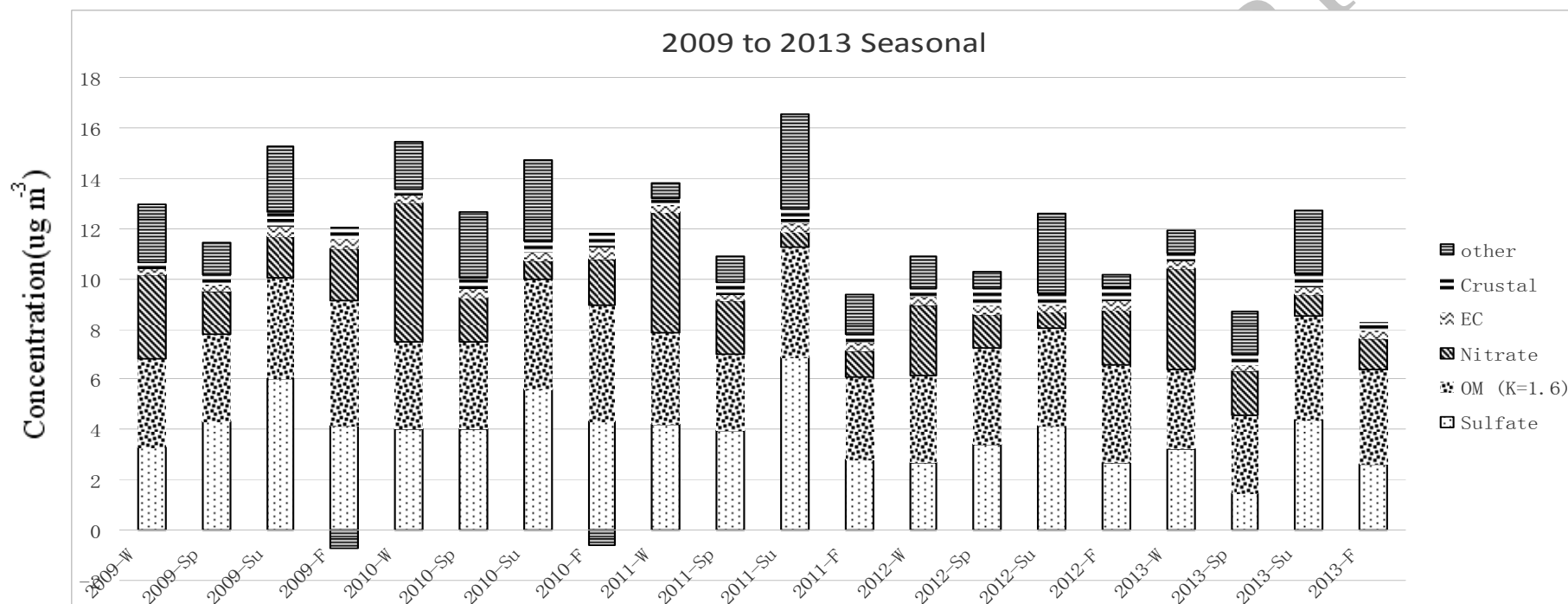


Fig. 4. Chemical Speciation from 2009 to 2013, Taft (Seasonal average) ($\mu\text{g m}^{-3}$). Sp: Spring; Su: Summer; F: Fall; W: Winter

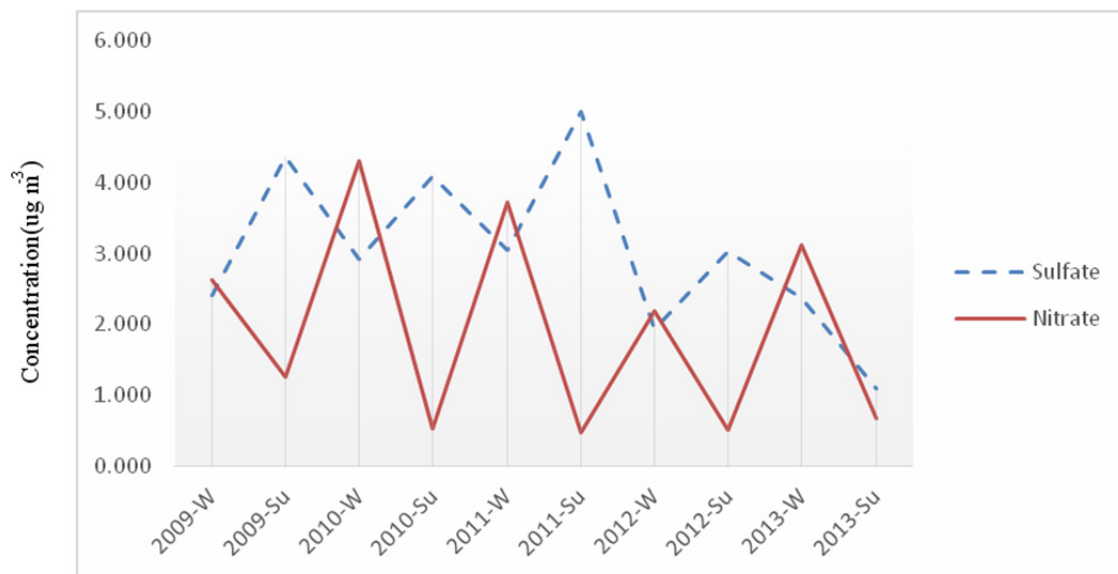


Fig. 5. Sulfate and nitrate trends in summer and winter, Taft. (Su: Summer, W: Winter)

ACCEPTED MANUSCRIPT

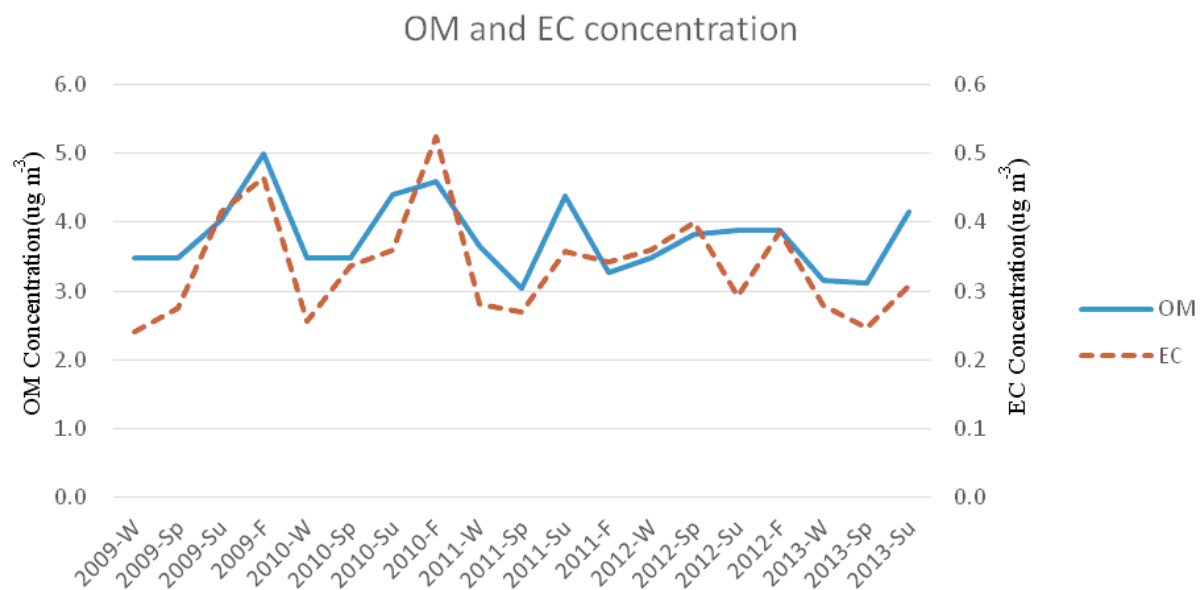


Fig. 6. OM and EC seasonal trend, Taft, 2009 to 2013(,Sp:Spring,Su:Summer,F:Fall, W:Winter).

ACCEPTED MANUSCRIPT

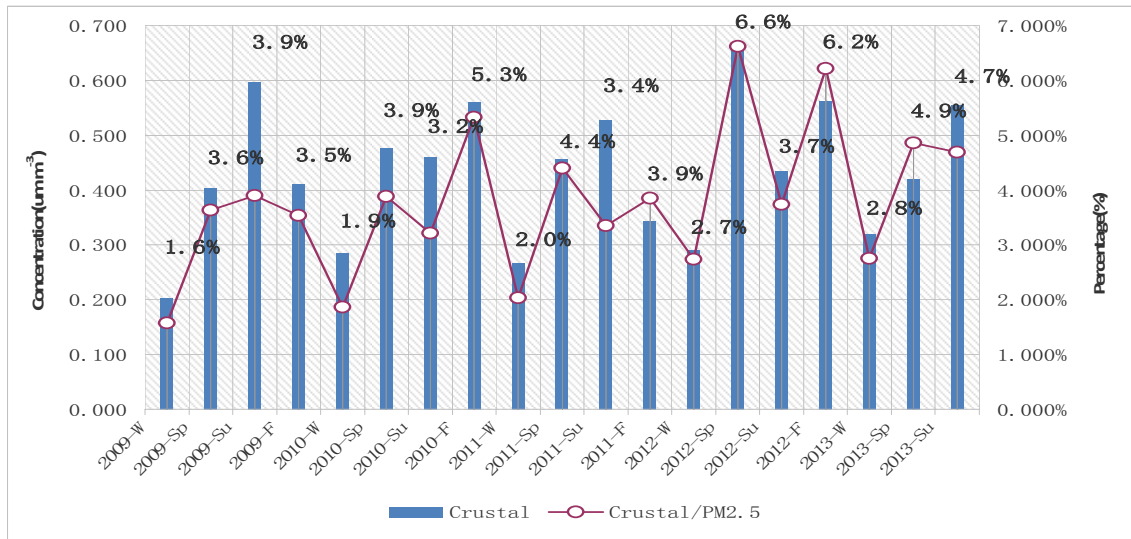


Fig. 7. Seasonal trend of the crustal material, Taft, 2009 to 2013

ACCEPTED MANUSCRIPT

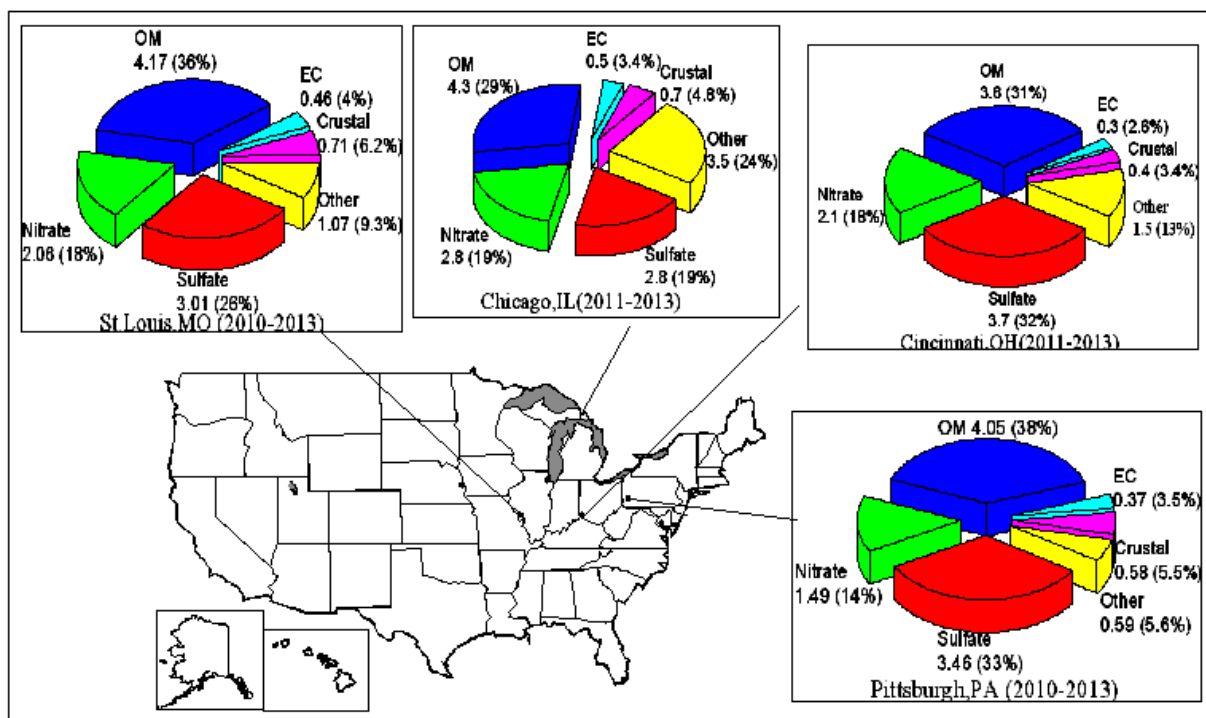


Fig. 8. Comparison of PM_{2.5} composition from nearby cities, 2011 to 2013 ($\mu\text{g m}^{-3}$)

ACCEPTED MANUSCRIPT