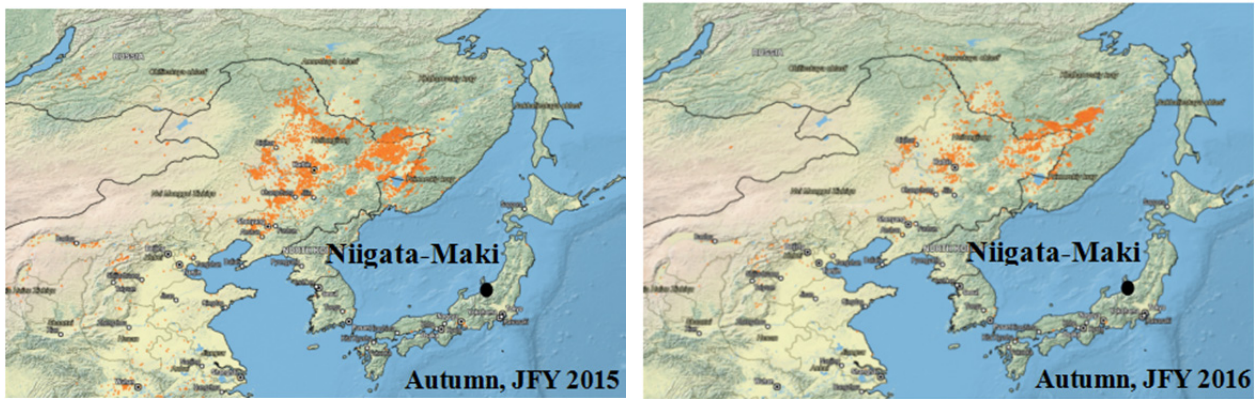


## Supplementary Figure

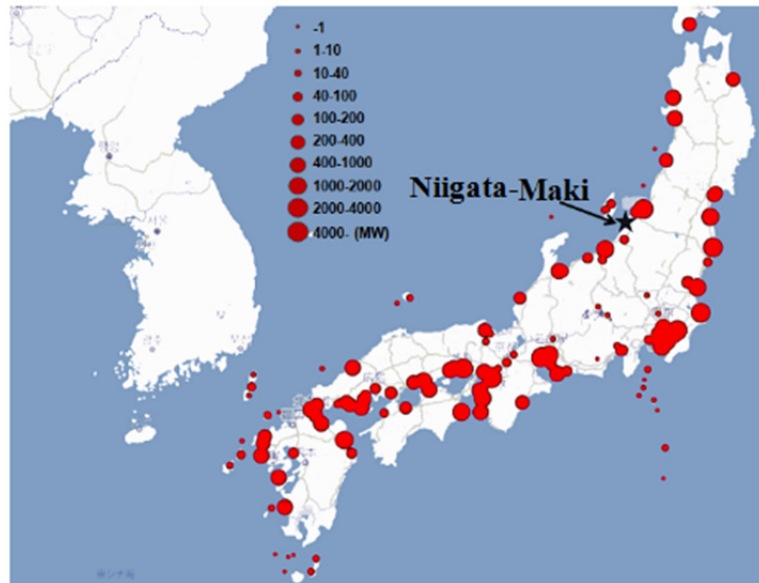
**Fig. S1.** Fire spots of biomass burning activity in autumn in Northeast Asia during JFY 2015 and 2016 (<https://firms.modaps.eosdis.nasa.gov/firemap/>).

**Fig. S2.** Location of thermal power plants in Japan, referenced from (Electrical Japan, 2017).

**Fig. S3.** The back trajectory analysis results in spring at Niigata-Maki site in JFY 2015 and 2016.



**Fig. S1.** Fire spots of biomass burning activity in autumn in Northeast Asia during JFY 2015 and 2016 (<https://firms.modaps.eosdis.nasa.gov/firemap/>).



**Fig. S2.** Location of thermal power plants in Japan, referenced from (Electrical Japan, 2017).

