

Supplemental Information for Identification of fine particulate matter sources in Kandy, Sri Lanka

M.C. S. Seneviratne,¹ H.M.N.L. Handagiriathira,¹ S. Sanjeevani,¹ R.K.D. Madusha,¹ V.A. Waduge,¹ T.N. Attanayake,¹ H.E.M.D. Bandara,² Philip K. Hopke³

1. Atomic Energy Board, 60/460, Baseline Road, Orugodawatta, Wellampitiya, Sri Lanka
2. Central Environmental Authority, Battaramulla, Sri Lanka
3. Center for Air Resources Engineering and Science, Clarkson University, Potsdam, NY, USA

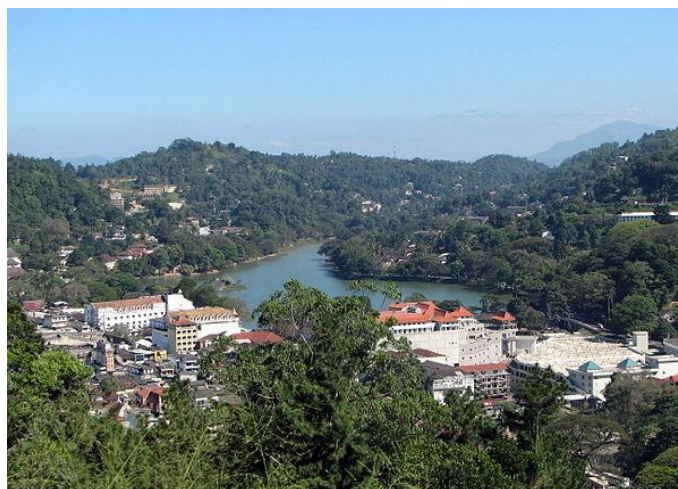


Figure S 1. View of Kandy, Sri Lanka

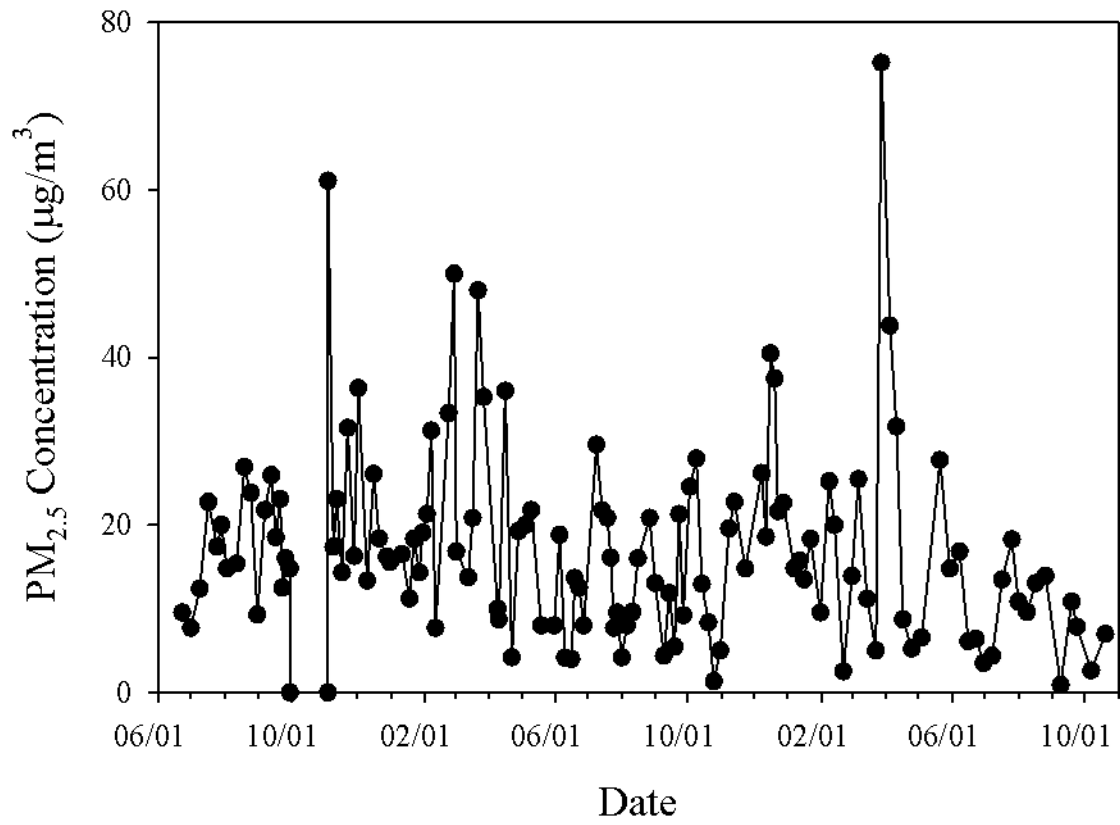


Figure S2. Time series of measured PM_{2.5} mass concentrations in Kandy, Sri Lanka

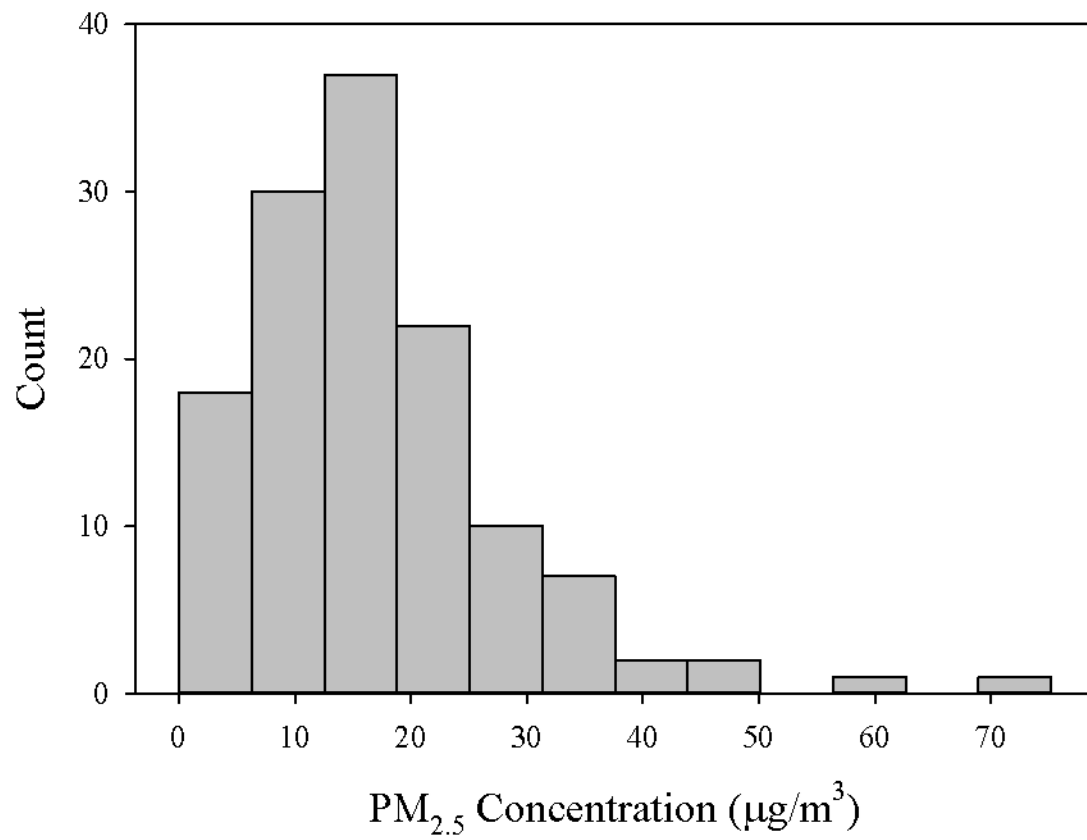


Figure S3. Histogram describing the distribution of PM_{2.5} mass values measured in Kandy, Sri Lanka.

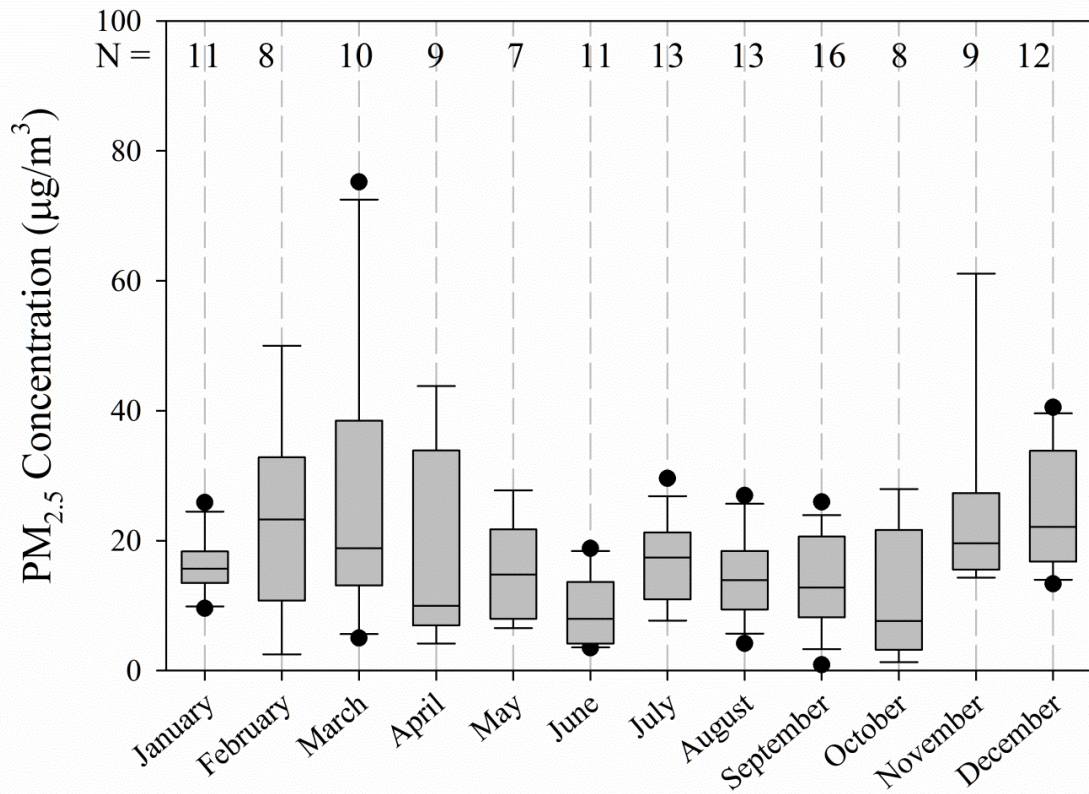


Figure S4. Box and whisker plot showing the monthly distributions of PM_{2.5} mass. N values are the number of samples collected in a given month.

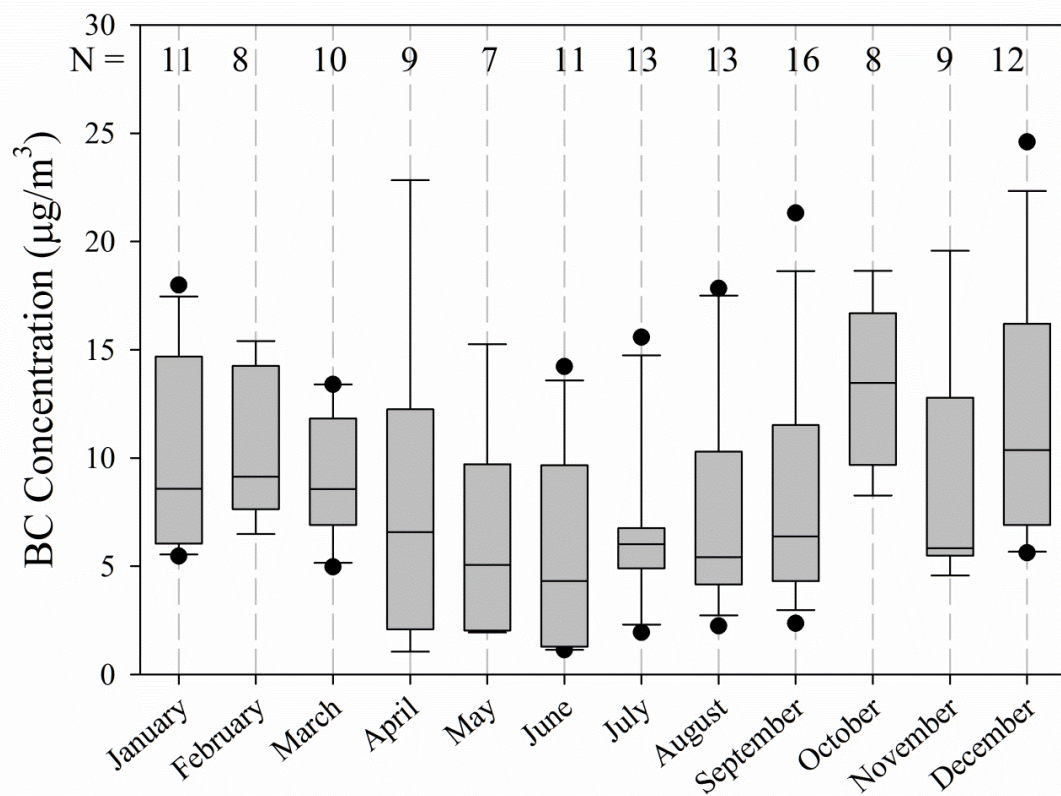


Figure S5. Box and whisker plot showing the monthly distributions of BC mass. N values are the number of samples collected in a given month.